

SILVERSTONE

MATERIAL HANDLING



WE TURN THE TRUCK MARKET UPSIDE DOWN

Welcome to our new catalogue.

Our Electric Equipment has been developed in a fantastic way and we are today marketing a complete product range in the area lighter Material handling.

Silverstone is also offering special products, based on needs, in mobile and static Lift Tables.

It should be easy and problem-free to purchase from us. Therefore we store more than 350 different products for fast delivery. You buy direct from our selected Dealers, located around Europe. Inquiries regarding prices, products and delivery time, please contact your closest Dealer.

Do you need information about closest Dealer, please contact us at Silverstone, or visit our webpage: www.silverstone.se



For pictures and more information, please visit our website www.silverstone.se



HAND PALLET TRUCKS
HIGH LIFTING PALLET TRUCKS
POWERED PALLET TRUCKS

5-21



LIGHT WEIGHT LIFTERS
MANUAL STACKERS
SEMI ELECTRICAL STACKERS
POWERED STACKERS
ORDER PICKERS

22-39



LIFT TABLES
SCISSOR LIFT TABLES
LOW-PROFILE LIFT TABLES
MOBILE LIFT TABLE

40-46



MACHINE SKATES
HYDRAULIC JACKS

47-49



WORKSHOP CRANES
CRANE AND FORM EQUIPMENT
DRUM HANDLING

50-52



FURNITURE HANDLERS
STRAPPING MACHINE
PLATFORM TROLLEYS
SACK TRUCKS

53-55



UNIVERSAL SHELVING
STEEL CABINETS

56-59


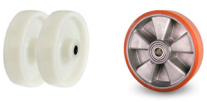
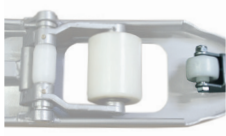


All our products are CE-marked

INTRODUCTION

WHAT SHOULD I CHOOSE?

<p>MANUALLY</p> <p>Suits you who is lifting a few times a day or week and not moving the Stacker or the pallet a long distance.</p>	<p>SEMI-ELECTRIC</p> <p>Suits you who is lifting a couple of times a day or more than 2 meters high, but not moving the pallet.</p>	<p>FULL ELECTRIC</p> <p>Suits you who is lifting several times a day or moving the pallet.</p>
--	--	---

CHOOSE THE RIGHT HAND PALLET TRUCK!

 <p>Single or boogie wheels?</p> <ul style="list-style-type: none"> • Single wheel option is optimal when handling lighter loads, even floors and when you need to lift pallet from the long side. • Boogie wheels is the choice for heavy loads, uneven floors like the back of a truck, gravelly floors, thresholds and ramps. 	 <p>Nylon or Polyurethane?</p> <ul style="list-style-type: none"> • Nylon wheels rolls very easy on hard floor and is the best alternative when handling heavy loads. • Polyurethane wheels are softer and quieter than nylon. They are mostly used where floor is uneven, in the back of truck and in environments where low noise is appreciated. 	 <p>Entry/exit rollers</p> <p>Entry/exit rollers is a good help when handling pallets from the long side or passing thresholds.</p> <p>These wheels can be found on most of Silverstone's pallet trucks.</p>	 <p>Which fork length?</p> <p>Most common fork length is 1150 mm. This length is very functional when handling EUR-pallets from short or long side. Shorter forks are sometimes used in confined spaces or when handling pallets from the long side. When handling pallets from short side forks are recommended to be longer than 900 mm.</p>	 <p>What is Quick-lift?</p> <p>Quick-lift function enables pallet to be lifted already on the second pump stroke when handling empty or very light loaded pallets, approx. 150 kg or less. When pallet weigh more the quick lift function automatically turn to normal lifting speed to enable easier lifting.</p> <p>Silverstone Q77-series are all equipped with Quick-lift.</p>
---	---	--	---	--

COUNTERBALANCE TRUCKS

We have a long standing partnership with one of the world's largest manufacturer of lighter material handling trucks. In recent years, they have developed and manufactured several models of counterbalance trucks with Lithium technology what providing a minimal maintenance costs of the forklifts.

We now have the opportunity to offer a full range of counterbalance trucks from 1,5 to 5,0 tons with Lithium technology. All our forklifts are equipped with LFP Lithium batteries that do not contains cobalt and are not flammable. The trucks are very affordable and are available with different equipment levels. For more information please visit our website. The counterbalance trucks are only sold through authorized dealers with trained service technicians. If you are interested in this product range and can offer maintenance, repair and service for forklifts to your customers then you are welcome to contact us.





66 series | Heavy-Duty, 1500-2500 kg

Maintenance free hand pallet truck with robust and strong chassis for rough and heavy handling. Normal lift function for easy lifting of heavy loads. Equipped with a built-in overload valve and maintenance free bushings. Lifts 7 mm/stroke.

- LIFTS 2500 kg
- RS BEARINGS
- 5 YEARS WARRANTY OF PUMP



TECHNICAL INFORMATION								
Art.no	Capacity (kg)	Fork width (mm)	Fork length (mm)	Fork height min/max (mm)	Weight (kg)	Steering wheel	Fork wheel	Price
6612-800/900	2500	540/160	800/900	85/205	58-60	Nylon	Single Nylon	
6612-1000/1150	2500	540/160	1000/1150	85/205	62-64	Nylon	Single Nylon	
6612-68-1000/1150	2500	680/160	1000/1150	85/205	65	Nylon	Single Nylon	
6613-1150	2500	540/160	1150	85/205	66	PU	Single PU	
6614-900/1150	2500	540/160	900/1150	85/205	62-66	Nylon	Boggie Nylon	
6615-900/1150	2500	540/160	900/1150	82/205	62-66	PU	Boggie PU	
6615-1500	2000	540/160	1500	85/205	95	PU	Boggie PU	
6615-2000	1500	540/160	2000	85/205	107	PU	Boggie PU	
RBQ77N-B	Foot brake							

* Polyurethane wheel = PU



Q77 series | Quick-Lift, 2300 kg

Popular maintenance-free pallet truck with quick lifting system, overload valve and maintenance free bushings. Robust and basic design to ensure long life. 3 year warranty.

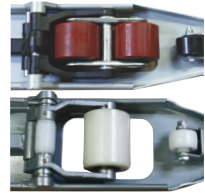


- LIFTS 2300 kg
- QUICK LIFT 25 mm/STROKE
- RS BEARINGS
- ERGONOMIC HANDLE

OPTION



Foot brake improves safety.



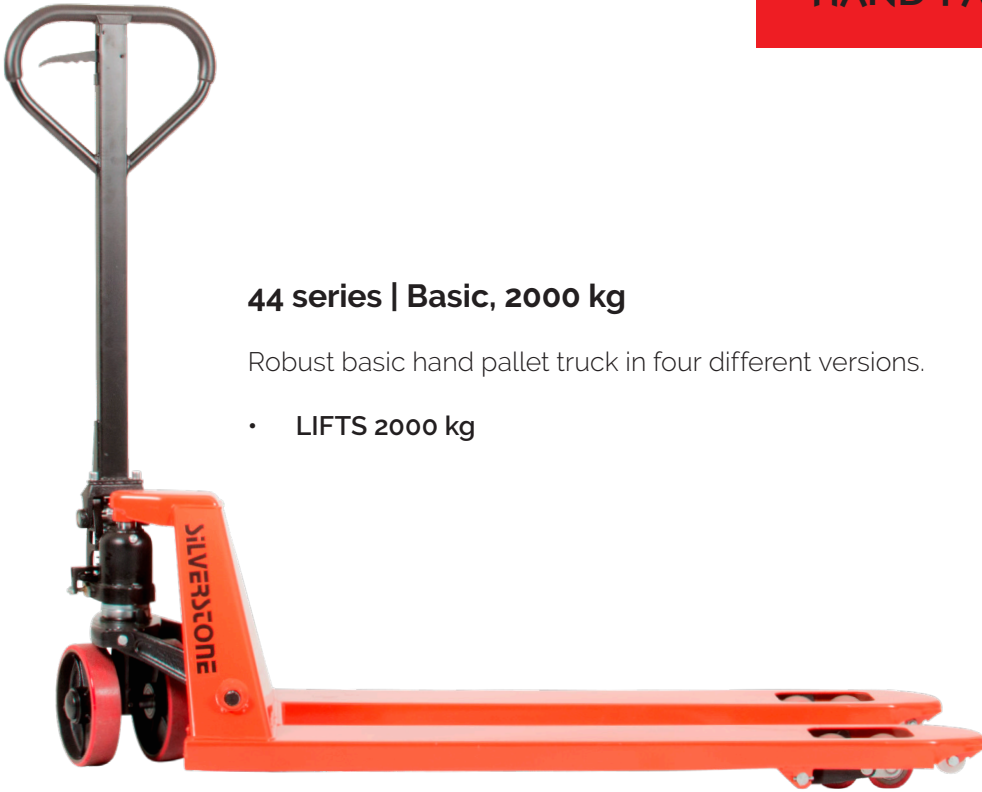
Single or boogie wheels, nylon or PU. Entry/exit rollers.

Q7715-1150

TECHNICAL INFORMATION

Art.no	Capacity (kg)	Fork width (mm)	Fork length (mm)	Fork height min/max (mm)	Weight (kg)	Steering wheel	Fork wheel	Price
Q7712-915/1150	2300	540/160	900/1150	85/205	63-66	Rubber	Single Nylon	
Q7713-915/1150	2300	540/160	900/1150	85/205	63-66	Rubber	Single PU	
Q7714-915/1150	2300	540/160	900/1150	85/205	65-68	Rubber	Boggie Nylon	
Q7715-915/1150	2300	540/160	900/1150	85/205	65-68	Rubber	Boggie PU	
Q7716-1150	2300	540/160	1150	85/205	66	Nylon	Single Nylon	
RBQ77N-B	Foot brake							

* Polyurethane wheel= PU



4415-1150

44 series | Basic, 2000 kg

Robust basic hand pallet truck in four different versions.

- LIFTS 2000 kg



8815-1150 | Basic, 3000 kg

Maintenance free hand pallet truck with robust and strong chassis for rough and heavy handling. Normal lift function for easy lifting of heavy loads up to 3000 kg. Equipped with a built-in overload valve and maintenance free bushings. Lifts 7 mm/ stroke.

- LIFTS 3000 kg
- BOGGIE PU

TECHNICAL INFORMATION

Art.no	Capacity (kg)	Fork width (mm)	Fork length (mm)	Fork height min/max (mm)	Weight (kg)	Steering wheel	Fork wheels	Price
4412-1150	2000	540/160	1150	85/200	63	Nylon	Single Nylon	
4413-1150	2000	540/160	1150	85/200	63	PU	Single PU	
4414-1150	2000	540/160	1150	85/200	63	Nylon	Boggie Nylon	
4415-1150	2000	540/160	1150	85/200	63	PU	Boggie PU	
8815-1150	3000	540/160	1150	85/205	77	PU	Boggie PU	

* Polyuretanhjul = PU

HPG20S | Galvanized, 2000 kg

The galvanized pallet truck is a low cost alternative to the stainless steel truck. The warm galvanized truck can "heal" small scratches which mean less corrosion. Equipped as the stainless steel truck plus grease nipples.



HPL20S | Low profile, 2000/1000 kg

This low profile pallet truck is only 35/51 mm high in its lowest position. Used for extra low pallets. Reinforced forks and chassis enables this low profile version. The HPSL20S has steel wheels while the HPL20S has PU.



TECHNICAL INFORMATION

Art.no	Capacity (kg)	Fork width (mm)	Fork length (mm)	Fork height min/max (mm)	Weight (kg)	Steering wheel	Fork wheels	Price
HPG20S	2000	540/160	1150	85/205	75	Nylon	Boggie Nylon	
HPL20S	2000	540/160	1150	51/175	72	PU	Boggie PU	
HPSL20S	1000	540/160	1150	35/160	70	PU	Steel wheel	

* Polyurethane wheel = PU



ZF20S | Electronic weight indicator, 2000 kg

Stationary and mobile weighing can be used also as a normal pallet truck. Accuracy is 0,1% of the total weight, 1 kg graduation. IP65. Four load cells for accurate weighing even when loads are uneven. Tara function to add on or withdraw from net weight. Weighing device powered with 4 pcs 1,5V type AA batteries. Display turns off automatically after 3 min in standby position.

AC20S | Electronic weight indicator, 2000 kg

Pallet Truck with electronic weight indicator. Stationary and mobile weighing, can be used as a normal Pallet Truck. Accuracy is 0,5% of the total weight. 1 kg graduation. Tara function to add on or withdraw from net weight. 4 load cells provides accurate weighing on uneven loads. The built-in batteries are charged with extern charger.



ND1000/ND3000 | Electronic weight indicator, 1000/3000 kg

"U" shaped scale for easy access for on/off loading of open bottom pallets and containers. No need for pit or load ramps. Can easily be lifted and relocated due to light net weight. Tara function. 580 mm between legs. Accuracy 1 kg. Resolution steps 10 kg. Net weight 38 kg.

TECHNICAL INFORMATION

Art.no	Capacity (kg)	Fork width (mm)	Fork length (mm)	Outer dimensions (mm)	Weight (kg)	Steering wheel	Fork wheels	Price
ZF20S	2000	555/180	1150	-	117	PU	Boggie PU	
AC20S	2000	545/162	1150	-	106	PU	Boggie PU	
ND1000	1000	580/120	-	B850xH100xD1200	38	-	PU	
ND3000	3000	580/120	-	B850xH100xD1200	38	-	PU	

* Polyurethane wheel = PU

HIGH LIFTING PALLET TRUCKS

SE1056 | Electric/Battery

Compact and easy to operate. Built-in charger, with 70Ah/12V battery as standard that gives many working hours per charging. SE1056 lifts and lowers forks very quickly. PU wheels.

- ELECTRICAL PUMP
- EASY TO USE
- TWO FORK LENGTHS: 1150/1500



Optimal utility for lifting goods to ergonomical working height.

SM1056 | Quick-lift/Manual

World class lifter. High performing lifter with a single lifting cylinder and tall upper part which makes this high lifter very reliable and easy to operate. PU wheels.

- MANUAL PUMP
- QUICK-LIFT



S1000 | Compact, Quick-lift/Manual

With a telescopic 2-stage lifting cylinder. Automatic quick-lift function up to 150 kg loads, double lifting speed. PU wheels.

- MANUAL PUMP
- TWO FORK LENGTHS: 1150/1500
- QUICK-LIFT



TECHNICAL INFORMATION

Art.no	Type	Capacity (kg)	Fork width (mm)	Fork length (mm)	Fork height min/max (mm)	Lifting speed (mm/stroke)	Weight (kg)	Steering wheel	Price
S1000	Manual quick-lift pump	1000	560/160	1150	85-800	18/28	115	PU	
S1000-1500	Manual quick-lift pump	1000	560/160	1500	85-800	18/28	135	PU	
SM1056	Manual quick-lift pump	1000	560/160	1190	85-800	12/28	128	PU	
SE1056	Electric pump	1000	560/160	1190	85-800	42/61	158	PU	
SE1056-1500	Electric pump	1000	560/160	1500	85-800	42/61	170	PU	

* Polyurethane wheel = PU

HB1056M-Y | Quick-lift/manual

Basic high lifting pallet truck with telescopic 1-stage lifting cylinder.

- MANUAL PUMP
- QUICK-LIFT



HL1000-Y | Quick-lift/manual

Basic high lifting pallet truck with telescopic 2-stage lifting cylinder.

- MANUAL PUMP
- QUICK-LIFT
- TWO FORK LENGTHS: 1150/1500



SLP10-INOX | Quick-lift/manual

Stainless high lifting pallet truck with 2-stage lifting cylinder.

- MANUAL PUMP
- QUICK-LIFT



TECHNICAL INFORMATION									
Art.no	Type	Capacity (kg)	Fork width (mm)	Fork length (mm)	Fork height min/max (mm)	Lifting speed (mm/stroke)	Weight (kg)	Steering wheel	Price
HB1056M-Y	Manual quick lift pump	1000	540/160	1190	85-800	12/28	125	PU	
HL1000-Y	Manual quick lift pump	1000	540/160	1150	85-800	18/28	140	PU	
HL1000-15-Y	Manual quick lift pump	1000	540/160	1500	85-800	18/28	158	PU	
SLP10-INOX	Manual stainless quick lift	1000	535/160	1150	85-800	18/28	115	Nylon	

* Polyurethane wheel = PU

TOW TRACTOR

TW-1DC | 1000 kg

TW-1DC is developed to ensure the best ergonomomy during handling of e.g. different types of lorries. TW-1DC has a 1000 kg towing capacity and air filled rubber wheels. The steering handle is adjustable in three different angles, assuring the best ergonomomy.

TW-1DC is equipped with 24V/50Ah maintenance free batteries and built-in charger. CURTIS steering system makes TW-IDC very reliable. Flexible towing arm with automatic return to starting position. It is equipped with a specific lever that releases the brake if the power is out. Standard bracket is included, but can be adjusted according to customer requirements.

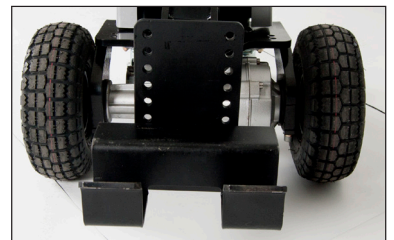
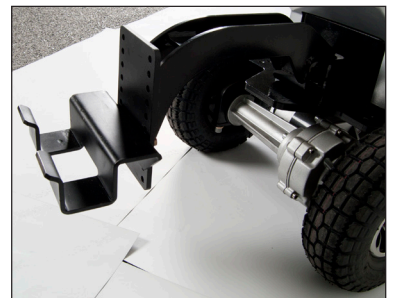
- MINI TRACTOR
- BUILT-IN CHARGER
- MAINTENANCE FREE BATTERY

PERFECT FOR

- MOVING GOODS
- WORKSHOPS
- STORES
- WAREHOUSES



TECHNICAL INFORMATION		
Art. no		TW-1DC
Capacity	(kg)	1000
Dimensions (LxWxH)	(mm)	1255x520x1070
Weight incl. battery	(kg)	95
Wheel type		Rubber
Wheels		2xØ250x85 (front) 2xØ75x32 (back)
Battery	(V/ Ah)	2x 24/50
Battery type		Maintenance free
Steering system		CURTIS
Drive motor		DC 0,4 kW
Price		



QDD30TS-C | 3000 kg

Compact designed and fast tow tractor. A big 240Ah battery provides operating time for a full day's work. Springy chair, adjustable steering wheel and power steering provide good comfort. The driver's seat offers good ergonomics and spacious environment.

- POWER ASSISTED STEERING
- SPEED UP TO 17 KM/H
- NON MARKING WHEELS

PERFECT FOR

- MOVING GOODS
- WORKSHOPS
- STORES
- WAREHOUSES

TECHNICAL INFORMATION	
Art.no	QDD30TS-C
Type	Tow tractor
Capacity (kg)	3000
Outer dimensions (LxWxH) (mm)	1730x985x1300
Ground clearance (mm)	150
Weight (kg)	972
Wheel type	Solid rubber
Wheel base (mm)	930
Turning radius (mm)	1575
Travel speed, load/no load (km/h)	7/17 km/h
Battery (V/Ah)	48/240
Battery type	Truck battery with central refill
Brakes	Mechanical + Hydraulic
Drive motor (kW)	AC 6,0
Steering system	ZAPI
Price	



TECHNICAL INFORMATION		
Art. no		T20-PL153
Type		Walkie
Capacity	(kg)	1500
Fork dimensions (LxBxH)	(mm)	1150x150x50
Outer fork width	(mm)	560
Weight	(kg)	115
Steering wheel		Ø210x70
Wheel type		Boggie PU
Load center	(mm)	600
Total lenght	(mm)	1550
Total width	(mm)	560
Lifting hight	(mm)	80-115
Turning radius	(mm)	1390
Travel speed, load/no load	(km/h)	4,0-4,5
Battery	(V/Ah)	24/20
Battery type		Lithium Maintenance free
Steering system		CURTIS
Drive motor		DC 0,75
Lift motor	(kW)	0,5
Price		
* Polyurethane wheel = PU		

T20-PL153 | 1500 kg

Smooth and easy-to-use powered hand pallet truck. Maintenance-free and built-in 24V / 20Ah battery provides 3 hours of effective use. External charger.

- ELECTRIC
- MAINTENANCE-FREE BATTERIES
- DRIVE MOTOR FOR PROFESSIONAL USE



LI-ION
LITHIUM TECHNOLOGY

T20-PL163Z | 1600 kg

Smooth and easy-to-use powered hand pallet truck. Maintenance-free and removable 24V/30Ah battery provides 4 hours of effective use. Built-in charger.

- ELECTRIC
- MAINTENANCE-FREE BATTERIES
- BUILT-IN CHARGER
- CRAWL SPEED FUNCTION
- DRIVE MOTOR FOR PROFESSIONAL USE
- SUPPORT WHEELS



LI-ION
LITHIUM TECHNOLOGY

TECHNICAL INFORMATION		
Art. no		T20-PL163Z
Type		Walkie
Capacity	(kg)	1600
Fork dimensions (LxBxH)	(mm)	1150x150x50
Outer fork width	(mm)	560
Weight	(kg)	130
Steering wheel		Ø210x70
Wheel type		Boggie PU
Load center	(mm)	600
Total lenght	(mm)	1580
Total width	(mm)	670
Lifting hight	(mm)	80-115
Turning radius	(mm)	1420
Travel speed, load/no load	(km/h)	4,5-5,0
Battery	(V/Ah)	24/30
Battery type		Lithium Maintenance free
Steering system		CURTIS
Drive motor		DC 0,75
Lift motor	(kW)	0,5
Price		
* Polyurethane wheel = PU		

T20-12EZ - PRO | 1200 kg

A compact and fast electric pallet truck with electrical lifting and manual lowering function. Maintenance-free and removable 20Ah lithium battery provides minimum 3 hours effective use. External charging dock allows you to charge an extra battery while using the truck. The charging time is only 2,5 hours, which together with an extra battery makes it possible to use the truck 24-7.



- LITHIUM BATTERY
- EXTREMELY COMPACT DESIGN
- TURNING RADIUS 1350 MM
- EXTERNAL CHARGING DOCK INCLUDED
- DRIVE MOTOR FOR PROFESSIONAL USE



TECHNICAL INFORMATION		
Art. no		T20-12EZ PRO
Type		Walkie
Capacity	(kg)	1200
Ground clearance	(mm)	27
Fork dimensions (LxWxH)	(mm)	1150x150x50
Outer fork width	(mm)	560
Weight	(kg)	130
Wheel type		PU/PU
Steering wheel	(mm)	Ø210x70
Fork wheel	(mm)	2x Ø80x60
Wheels		1x /4
Load center	(mm)	600
Total length	(mm)	1540
Total width	(mm)	560
Lifting height	(mm)	80-195
Turning radius	(mm)	1390
Travel speed, load/no load	(km/h)	4,5-5,0
Lifting speed, load/ no load	(cm/s)	2,0-3,0
Lowering speed, load/ no load	(cm/s)	3,0-4,0
Max gradeability load/ no load	(%)	2/8
Battery	(V/Ah)	24/20
Battery type		Lithium Maintenance free
Brakes		Electromagnetic
Steering system		CURTIS
Drive motor	(kW)	DC 0,65
Lift motor	(kW)	0,5
Price		
* Polyurethane wheel = PU		



- Horn
- Electrical lifting function
- Digital display for battery status
- Ergonomically designed handle
- Manual lowering function



- Magnetic key
- Central placed emergency stop
- Removable lithium battery



External charging dock allows you to charge an extra battery while using the truck. The charging time is only 2,5 hours.

POWERED PALLET TRUCK

T20-15 series | 1500 kg

Affordable full-electric pallet truck with many advantages. Two support wheels enhance stability and safety. Built-in charger with a 24V/85 Ah maintenance free battery which lasts a full working day. Curtis controller provides reliability and is easily adapted to the operator. Electromagnetic disc brake ensures that braking is always safe and reliable. A throughout safety thinking have among many things resulted in a creep function and an automatic decrease of speed at sturdy or sudden turnings. Ergonomically designed handle and controls makes the machine comfortable and easy to operate. Friendly to operator's arms and shoulders. Machine can handle most pallets and has a capacity of 1500 kg.

PERFECT FOR

- MOVING GOODS
- WORK SHOPS
- STORES
- WAREHOUSES
- TRUCKS

TECHNICAL INFORMATION				
Art.no	T20-15ET2	T20-15ETS	T20-15ET-SC	T20-15ET-1400
Type	Walkie	Walkie	Walkie	Walkie
Capacity (kg)	1500	1500	1500	1500
Weight incl. battery (kg)	195	205	205	205
Wheel type	PU/PU	PU/PU	PU/PU	PU/PU
Steering wheel (mm)	Ø210x70	Ø210x70	Ø210x70	Ø210x70
Fork wheel (mm)	2x Ø78x60	2x Ø80x60	2x Ø80x60	2x Ø80x60
Wheels (x=driving wheel)	1x /4	1x 2/4	1x /4	1x /4
Load center (mm)	600	600	600	600
Lifting height (mm)	80-195	85-200	85-200	85-200
Total length (mm)	1640	1650	1650	1900
Total width (mm)	568	600	600	600
Fork dimensions (LxWxH) (mm)	1150x150x50	1150x150x50	1150x150x50	1400x150x50
Outer fork width (mm)	560	560	560	560
Ground clearance (mm)	30	35	35	35
Turning radius (mm)	1485	1485	1485	1485
Travel speed, load/no load (km/ h)	4/4,5	4/4,5	4/4,5	4/4,5
Max gradeability, load/no load (%)	2/6	2/6	2/6	2/6
Brakes	Electro-magnetic	Electro-magnetic	Electro-magnetic	Electro-magnetic
Battery (V/Ah)	2x12/65	2x12/85	2x12/85	2x12/85
Battery type	Maintenance free	Maintenance free	Maintenance free	Maintenance free
Steering system	CURTIS	CURTIS	CURTIS	CURTIS
Drive motor (kW)	DC 0,65	DC 0,65	DC 0,65	DC 0,65
Lift motor (kW)	0,84	0,84	0,84	0,84
Price				

* Polyurethane wheel = PU

- COMPACT DESIGN
- ERGONOMICAL HANDLE
- RELIABLE CURTIS STEERING SYSTEM
- BATTERY INDICATOR & EMERGENCY BRAKE
- FORK LENGTH 1150 OR 1400MM
- 5 WHEELS ON FLOOR



reddot design award





T20-15ET-SC

Back lighted display with Tara function.

- Adding function
- Accuracy is 1 kg
- Equipped with 4 load cells
- Scale is powered by the built-in battery

T20-18ET | 1800 kg

Compact designed full electric pallet truck with high performance.

Maintenance free AGM-battery, 2x12V/85 Ah will last for 4 effective working hours after every charge cycle. Built-in charger. Zapi electronic control system which can be tuned to operators profile. Electromagnetic disc brake ensures that braking is always safe and reliable. Integrated "turtle speed" when handle bar is tilted 15 degrees which enables precision drive in narrow spaces.

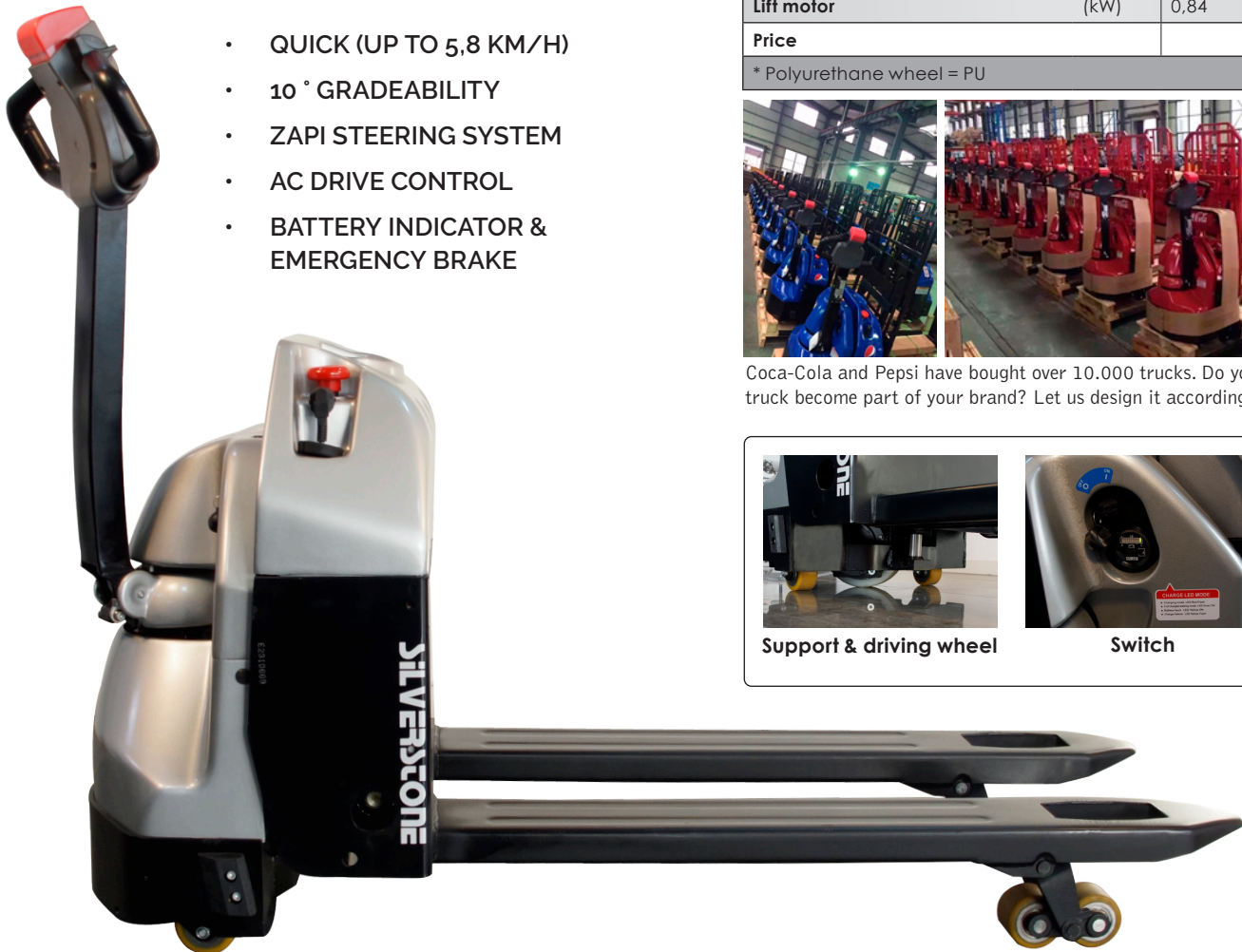
PERFECT FOR

- MOVING GOODS
- WORK SHOPS
- STORES
- WAREHOUSES
- TRUCKS



TECHNICAL INFORMATION	
Art.no	T20-18ET
Type	Walkie
Capacity (kg)	1800
Weight incl. battery (kg)	285
Wheel type	PU/PU (rubber steering wheel an option)
Steering wheel (mm)	Ø230x76
Fork wheel (mm)	2x Ø 74x89
Wheels (x=driving wheel)	1x +2/4
Lifting height (mm)	85-200
Total length (mm)	1625
Total width (mm)	645
Fork dimensions (LxWxH) (mm)	1150x150x50
Outer fork width (mm)	540
Ground clearance (mm)	35
Turning radius (mm)	1475
Travel speed, load/no load (km/ h)	5,0/5,5
Lifting speed, load/no load (cm/s)	5,1-6,0
Lowering speed, load/no load (cm/s)	5,2-5,9
Max gradeability, load/no load (%)	6/16
Brakes	Electromagnetic
Battery (V/Ah)	2x 12/85
Battery type	Maintenance free
Steering system	ZAPI
Drive motor (kW)	AC 1,0
Lift motor (kW)	0,84
Price	

* Polyurethane wheel = PU



- QUICK (UP TO 5,8 KM/H)
- 10 ° GRADEABILITY
- ZAPI STEERING SYSTEM
- AC DRIVE CONTROL
- BATTERY INDICATOR & EMERGENCY BRAKE



Coca-Cola and Pepsi have bought over 10.000 trucks. Do you want to let your truck become part of your brand? Let us design it according to your wishes!



T20-16ET | 1600 kg

Compact designed full electric pallet truck with **air suspension on the drive wheel** for smooth handling on rough surface. Climbing wheel to overcome obstacles.

Maintenance free AGM-batteries, 4x12V/30 Ah will last for 6 effective working hours after every charge cycle. Built-in charger. Inner components can be accessed through one single step of opening the upper cover. Change of steering wheel in 5 minutes by unscrewing a single nut.



- AIR SUSPENSION ON THE DRIVE WHEEL
- CLIMBING WHEEL
- LARGE STEERING WHEEL IN RUBBER
- EASY MAINTENANCE

TECHNICAL INFORMATION		
Art.no	T20-16ET	T20-20ET
Type	Walkie	Walkie
Capacity (kg)	1600	2000
Weight incl. battery (kg)	215	220
Wheel type	PU/PU	PU/PU
Steering wheel	Ø255x74	Ø250x74
Wheels (x=driving wheel)	1x +2/4	1x +2/4
Lifting height (mm)	80-220	80-220
Total length (mm)	1685	1685
Total width (mm)	560	560
Fork dimensions (LxWxH) (mm)	1150x150x50	1150x150x50
Outer fork width (mm)	560	560
Ground clearance (mm)	30	30
Turning radius (mm)	1465	1465
Travel speed, load/no load (km/ h)	4/5,5	4/5,5
Max gradeability, load/no load (%)	8/16	8/16
Brakes	Electro-magnetic	Electro-magnetic
Battery (V/Ah)	48/30	48/30
Battery type	Maintenance free	Maintenance free
Steering system	CURTIS	CURTIS
Drive motor (kW)	DC 0,75	DC 0,75
Lift motor (kW)	0,84	0,84
Price		

* Polyurethane wheel = PU

T20-20ET | 2000 kg

Compact designed full electric pallet truck with **air suspension on the drive wheel** for smooth handling on rough surface.

Maintenance free AGM-batteries, 4x12V/30 Ah will last for 6 effective working hours after every charge cycle. Built-in charger. Inner components can be accessed through one single step of opening the upper cover. Change of steering wheel in 5 minutes by unscrewing a single nut.

- AIR SUSPENSION ON THE DRIVE WHEEL
- 6 HOURS DRIVING TIME
- LARGE STEERING WHEEL
- EASY MAINTENANCE



T20-20RA series | 2000 kg

Silverstone T20-20RA is a stand-on pallet mover for quick movements of goods. Latest generation AC motor technology ensures good performance and high security.

Regenerative, electromagnetic brakes provides good performance and reduces wear-out. High quality components to achieve the best operating economy, e.g. lifting motor from Bucher. A travel speed of 8.5 km/h provides efficient and fast transportations. 210 Ah battery enables T20-20RA to operate a full working day. Even more powerful batteries are available if needed.

- AVAILABLE WITH POWER STEERING
- FAST (8,5 KM/H)
- COMPACT & FOLDABLE HANDLES
- FOLDABLE, ABSORBING RIDER STAND
- 210 AH INDUSTRY BATTERY
- AVAILABLE WITH 2400MM FORK LENGHT
- AC DRIVE CONTROL

PERFECT FOR

- MOVING GOODS
- STORES
- TERMINALS
- WAREHOUSE

TECHNICAL INFORMATION		
Art.no	T20-20RAS (EPS)	T20-25RA (2400 mm)
Type	Rider stand	Rider stand
Capacity (kg)	2000	2000
Weight incl. battery (kg)	670	770
Wheel type	PU/PU	PU/PU
Steering wheel	Ø230x75	Ø230x75
Wheels (x=driving wheel)	1x +2/ 4	1x +2/ 4
Lifting height (mm)	85-210	85-120
Total length (mm)	1860	3060
Total width (mm)	730	740
Fork dimensions (LxWxH) (mm)	1150x170x55	2400x170x55
Outer fork width (mm)	540	540
Ground clearance (mm)	35	30
Aisle width with 800x1200 pallet (mm)	2184	3717
Turning radius (mm)	1700	2330
Travel speed, load/no load (km/ h)	7,5/ 8,5	7,5/8,5
Max gradeability load/no load (%)	8/16	8/16
Brakes	Electromagnetic	Electromagnetic
Battery (V/Ah)	24/210	24/280
Battery type / Central filling	Industry battery / Yes	Industry battery / Yes
Steering system	ZAPI	ZAPI
Drive motor (kW)	AC 1,5	AC 1,5
Lift motor (kW)	0,84	0,84
Price		

* Polyurethane wheel = PU



T20-RPL201H | 2000 kg

Silverstone RPL-201Li is a stand-on pallet mover for quick movements of goods. Latest generation AC motor technology ensures good performance and high security.

Regenerative, electromagnetic brakes provides good performance and reduces wear-out. High quality components to achieve the best operating economy, e.g. drive motor from Bucher. A travel speed of 12 km/h provides efficient and fast transportations. 210 Ah battery enables RPL-201Li to operate a full working day. Even more powerful batteries are available if needed.

- POWER STEERING
- FAST (12 KM/H)
- COMPACT & FOLDABLE HANDLES
- FOLDABLE, ABSORBING RIDER STAND
- 210 LITHIUM BATTERY
- AC DRIVE CONTROL

PERFECT FOR

- MOVING GOODS
- STORES
- TERMINALS
- WAREHOUSE



TECHNICAL INFORMATION	
Art.no	T20-RPL201H (EPS)
Type	Rider stand
Capacity (kg)	2000
Weight incl. battery (kg)	630
Wheel type	PU/PU
Steering wheel	Ø230x75
Wheels (x=driving wheel)	1x +2/ 4
Lifting height (mm)	85-120
Total length (mm)	1860
Total width (mm)	730
Fork dimensions (LxWxH) (mm)	1150x170x55
Outer fork width (mm)	540
Ground clearance (mm)	30
Aisle width with 800x1200 pallet (mm)	2372
Turning radius (mm)	1700
Travel speed, load/no load (km/ h)	9,0/ 12,0
Max gradeability load/no load (%)	8/16
Brakes	Electromagnetic
Battery (V/Ah)	24/210
Battery type	Lithium Maintenance free
Steering system	ZAPI
Drive motor (kW)	AC 2,5
Lift motor (kW)	2,2
Price	
* Polyurethane wheel = PU	

L-I-ON
LITHIUM TECHNOLOGY



T20-RASS | 2000 kg

Maintenance-free AC drive motor and powerful vertical gearbox for increased durability. Silently hydraulic unit with high quality components. Side support for increased visibility with forward and backwards driving.

Foot switch what prevents unintentional use. Automatic brake with anti-roll function for higher safety if the truck is left on uneven ground or slope. Unique suspension system DFA (Driving Floating System) which ensures high stability at high speeds. Battery access on the side for easy maintenance and battery replacement. Power steering for increased comfort

- ROTECTED DRIVING ENVIRONMENT
- POWER STEERING
- HIGH SPEED (12KM/H)
- 280 AH TRUCK BATTERY
- AC-DRIVE MOTOR
- CENTRAL BATTERY FILLING SYSTEM (BFS)

PERFECT FOR

- MOVING GOODS
- WAREHOUSES
- WORKSHOPS
- TERMINALS

TECHNICAL INFORMATION	
Art.no	T20-RASS (EPS)
Type	Rider stand
Capacity (kg)	2000
Weight incl. battery (kg)	845
Wheel type	PU/PU
Steering wheel	Ø230x75
Wheels (x=driving wheel)	1x +2/ 4
Lifting height (mm)	85-125
Total length (mm)	2255
Total width (mm)	730
Fork dimensions (LxWxH) (mm)	1150x170x55
Outer fork width (mm)	540
Ground clearance (mm)	30
Aisle width with 800x1200 pallet (mm)	2517
Turning radius (mm)	2075
Travel speed, load/no load (km/ h)	9,0/ 12,0
Max gradeability load/no load (%)	8/16
Brakes	Electromagnetic
Battery (V/Ah)	24/280
Battery type / Central filling	Industry battery / Yes
Steering system	ZAPI
Drive motor (kW)	AC 2,5
Lift motor (kW)	2,2
Price	
* Polyuretanhjul = PU	



T20-RASS



OPTION M-SERIE



Art. no M-SS
Diameter Ø 47 mm
Length 600 mm



Art.no M-DS
Diameter Ø 47 mm
Length 450 mm
CC distance 200 mm



Art. no M-RR
Roll inner dia. Ø 74-80 mm
Roll outer dia. Ø 500 mm
Roll length 250 mm



Art. no E-VB
Size 400x400 mm
Height 80 mm



M100/M200 | Platform

Operated by a manual hand winch and a steel wire which gives an accurate and fast lift/lowering function. The automatic brake system ensures a safe lowering. 4 castor wheels. Roll attachment options available.

Platform size (LxB): 480x600 mm



PM120 | Fork

The winch stacker has a very low weight compared to the rated lift capacity, therefore it is very handy and easy-to-use for the operator. It is equipped with adjustable forks for half size pallets, hand winch for lifting and lowering. Large sized rubber rear wheels and small front PU castor wheels, hand controlled brake.

Adjustable fork width, 345-485 mm.

TECHNICAL INFORMATION			
Art.no	PM120	M100	M200
Type	Manual	Manual	Manual
Capacity (kg)	120	100	200
Load center (mm)	200	235	235
Lifting height, min-max (mm)	95-1050	130-1500	130-1500
Lifting speed (mm/360°)	25	30	25
Fork dimensions (LxWxH) (mm)	400x345-485x14	400x330x40	400x330x40
Steering wheel (mm)	Ø200x50	Ø125x50	Ø125x50
Fork wheel (mm)	Ø50x20	Ø75x20	Ø75x20
Dimensions (LxWxH) (mm)	720x485x1360	840x600x1830	840x600x1920
Platform (LxW) (mm)	-	480x600	480x600
Weight (kg)	31	48	70
Price			

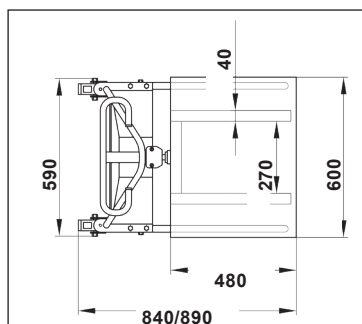
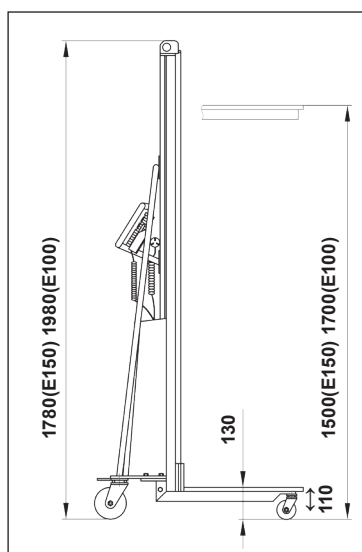
E series | Electronic, 80-200 kg

Very flexible and easy-to-operate. Designed to reviel back, neck and shoulders from all types of lifting work from floor level up to head level. Lift/lowering system with electrical motor, chain drive, electronic regulation of lift/lowering incl.soft start/stop, electric overload protection, portable and adjustable hand control unit, maintenance free/sealed battery, automatic built-in battery charger, hand control cable and charger cable. Standard support legs are 105 mm high.

Platform is made of polypropylene (PP).



All models are also available with low profile legs (85 mm).
Art. no RE80-Low



OPTION E-SERIE



Art. no E-SS
Diameter Ø 47 mm
Length 600 mm



Art. no E-DS
Diameter Ø 47 mm
Length 450 mm
CC distance 200 mm



Art. no E-RR
Roll inner dia. Ø 74-80 mm
Roll outer dia. Ø 500 mm
Roll length 250 mm



Art. no E-VB
Size 400x400 mm
Height 80 mm

TECHNICAL INFORMATION

Art.no	E80	E100	E100H	E100S	E150	E200
Type	Electronic	Electronic	Electronic	Electronic, Stainless	Electronic	Electronic
Capacity (kg)	80	100	100	100	150	200
Load center (mm)	235	235	235	235	235	235
Lifting height, min-max (mm)	130-1500	130-1700	130-2000	130-1700	130-1500	130x1500
Lifting speed (mm/s)	50	50	50	50	50	50
Platform (LxWxT) (mm)	470x600x15	470x600x15	470x600x15	470x600x15	470x600x15	470x600x15
Fork dimensions (LxWxT) (mm)	400x40x40	400x40x40	400x40x40	400x40x40	400x40x40	400x40x40
Battery (V/Ah)	12/24	12/24	12/24	12/24	12/24	12/34
Steering wheel / Loading wheel (mm)	Ø125/Ø75	Ø125/Ø75	Ø125/Ø75	Ø125/Ø75	Ø125/Ø75	Ø125/Ø75
Dimensions (LxWxH) (mm)	840x600x1790	840x600x1980	840x600x2280	840x600x1980	840x600x1790	960x600x1790
Weight (kg)	60	62	65	62	60	75
Price						

* Other accessories and other dimensions on request

ST400 series | Manual & electronic, 400 kg

The hydraulic stacker is equipped with both fixed forks and a lose, chromed platform for multipurpose use. You can handle half size pallets and/or use it as a mobile lifting table. Manual stacker with foldable foot pump lever for lifting and manual turning knob for lowering.

Platform size (LxW): 650x580 mm

Inner measure between supporting legs: 370 mm



TECHNICAL INFORMATION					
Art.no		ST400-850	ST400-1200	ST400-1500	ST400-1500EL
Type		Foot pump	Foot pump	Foot pump	Foot pump
Capacity	(kg)	400	400	400	400
Load center	(kg)	300	300	300	300
Lifting height, min-max	(mm)	85-850	80-1200	80-1500	80-1500
Lifting speed		12 mm/stroke	12 mm/stroke	12 mm/stroke	60 mm/sec
Fork width, total/fork	(mm)	650/100	650/100	650/100	650/100
Fork length	(mm)	650	650	650	650
Steering wheel / Loading wheel	(mm)	125x35/75x20	125x35/75x20	125x35/75x20	125x35/75x20
Fork wheel	(mm)	Ø150	Ø150	Ø150	Ø150
Turning radius	(mm)	850	850	850	850
Dimensions (LxWxH)	(mm)	1050x580x1060	1050x580x1300	1050x580x1720	1100x580x1720
Platform (LxW)	(mm)	650x580	650x580	650x580	650x580
Inner measure between supporting legs	(mm)	370	370	370	370
Inner measure between forks	(mm)	350	350	350	350
Measure from floor to upper part of supporting leg	(mm)	75	75	75	75
Lift motor	(W)	-	-	-	700
Battery	(V/Ah)	-	-	-	12/74
Weight	(kg)	75	98	110	145
Price					

EB series | Heavy-duty, 1000 kg

EB-Stackers has a welded and strengthened chassis for heavy loads. 1-stage or 2-stage lifting masts made of C-section profiles, dual chains and single lifting cylinder, fork carriage and wheels.

- **MANUAL STACKERS**
- **LIFTING HEIGHTS 1000-2500 mm**

TECHNICAL INFORMATION				
Art.no		EB-1010	EB-1016	EB-1025
Lifting mast		Simplex 1-stage	Simplex 1-stage	Duplex 2-stage
Capacity	(kg)	1000	1000	1000
Load center	(mm)	460	460	460
Lifting height, min-max	(mm)	85-1000 (free lift)	85-1600 (free lift)	85-2500
Lifting speed, quick-normal	(mm/stroke)	45-12,5	45-12,5	45-12,5
Fork width, total/fork	(mm)	550/160	550/160	550/160
Fork length	(mm)	1150	1150	1150
Steering wheel, nylon	(mm)	Ø150x40	Ø150x40	Ø150x40
Fork wheel, nylon	(mm)	Ø80x70 (singel)	Ø80x70 (singel)	Ø80x70 (singel)
Turning radius	(mm)	1350	1350	1350
Dimensions (LxWxH)	(mm)	1600x760x1430	1600x760x2030	1600x760x1840
Weight	(kg)	180	224	310
Price				



EB-1016



EB-1025

ES series | Quick-lift/heavy-duty, 1000 kg

Stackers has a welded and reinforced chassis for heavy loads, 1-stage or 2-stage lifting masts made of C-section profiles, dual chains and single lifting cylinder, fork carriage and wheels.

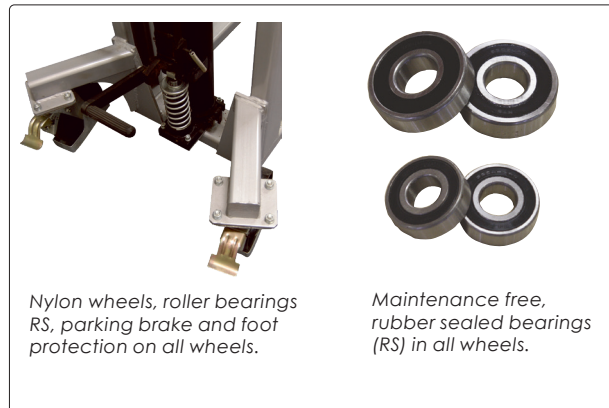
Sealed hydraulic system with protected pump and built-in overload valve. This gives a long and trouble free lifetime. They all have a unique, very easy to pump quick lifting system which lifts 45 mm/stroke when in quick position. Stackers applies to EN1757.

- EASY TO PUMP
- UNIQUE QUICK-LIFTSYSTEM
- QUICK-LIFT 45 mm/STROKE

UNIQUE EASY PUMPED!
Only 20 kg of traction - other brands 70-80 kg*
*at 1000 kg



Foot pump on the ES series



Nylon wheels, roller bearings RS, parking brake and foot protection on all wheels.



Maintenance free, rubber sealed bearings (RS) in all wheels.

TECHNICAL INFORMATION				
Art.no	ES1011	ES1015	ES1025	ES1029
Lifting mast	Simplex 1-stage	Simplex 1-stage	Duplex 2-stage	Duplex 2-stage
Capacity (kg)	1000	1000	1000	1000
Load center (mm)	500	500	500	500
Lifting height, min-max (mm)	85-1100 (free lift)	85-1500 (free lift)	85-2500	85-2900 (free lift)
Lifting speed, quick-normal (mm/stroke)	45-12,5	45-12,5	45-12,5	45-12,5
Fork width, total/fork (mm)	550/160	550/160	550/160	550/160
Fork length (mm)	1150	1150	1150	1150
Steering wheel, nylon (mm)	Ø150x40	Ø150x40	Ø150x40	Ø150x40
Fork wheel, nylon (mm)	Ø80x70 (single)	Ø80x70 (single)	Ø80x70 (single)	Ø80x70 (single)
Turning radius (mm)	1360	1360	1360	1360
Dimensions (LxWxH) (mm)	1605x860x1580	1605x860x1930	1670x860x1835	1670x860x2035
Height with mast in highest position (mm)	1580	1930	3050	3443
Weight (kg)	215	220	315	350
Price				

EMS series | 1000 kg

Semi-electric stacker suited for intensive handling and continuous lifting. Compact design ensures a small turning radius. Fast lifting/lowering speeds.

Easy and smooth steering makes the stacker safe and easy to operate. Service-friendly assembly of hydraulics, electrics and batteries. Large battery, 150Ah/12V, for many working hours per charging.

The perfect choice for high productivity requirements in confined spaces.

TECHNICAL INFORMATION			
Art.no	EMS-1016	EMS-1027	EMS-1035
Lifting mast	Simplex 1-stage	Duplex 2-stage	Duplex 2-stage
Capacity (kg)	1000	1000	1000
Load center (mm)	600	600	600
Lifting height, min-max (mm)	85 - 1600	85 - 2700	85 - 3500
Lifting speed, quick-normal (mm/s)	130 - 80	130 - 80	130 - 80
Lowering speed, load/ no load (mm)	190 - 400	190 - 400	190 - 400
Fork dimensions (LxWxH) (mm)	1150x160x50	1150x160x50	1150x160x50
Outer fork width (mm)	540	540	540
Steering wheel (mm)	Ø180x50	Ø180x50	Ø180x50
Fork wheel (mm)	Ø74x70	Ø74x70	Ø74x70
Turning radius (mm)	1350	1350	1350
Outer dimensions (LxBxH) (mm)	1660x800x2060	1660x800x1920	1660x800x2330
Height with mast in highest position (mm)	2060	3355	4060
Battery (V/Ah)	2x12/60	2x12/75	2x12/75
Battery type	Maintenance free	Maintenance free	Maintenance free
Lift motor (kW)	1,6	1,6	1,6
Weight (kg)	350	460	500
Price			



EMS-1016



EMS-1027



- GOOD VISIBILITY WHILE OPERATION
- LONG STEERING ARM FACILITATES NAVIGATION
- COMPACT DESIGN

POWERED STACKER | 1200 kg

Silverstone ES12-series is three compact electric stackers suitable for light material handling in several places such as shops, warehouses, small industries and such. Ergonomic controls, maintenance free batteries and built-in charger makes them all very easy to operate and for maintenance.

ECONOMICAL & COST EFFECTIVE

It is not only the purchase price that is attractive on the new Silverstone ES12-series for light material handling. These stackers are all built with well proven components which are easy to access. This ensures minimal maintenance costs. Forks moves quick up and down, which combined with good walking speed increases productivity.

SAFE

Raising and lowering features are easily accessible on the well-designed steering head. This allows the driver to fully concentrate on the load and stacking movements. The control handle is positioned to provide better visibility for both driving and stacking. A long tiller arm with low attachment point provides good safe distance between operator and machine. Also it increases maneuverability.

LIGHT WEIGHTING

Silverstone ES12-series stackers are compact, slick and weight not very much. This allows both driving and stacking in places where it might not otherwise be possible, such as entresols, narrow aisles or some floors that cannot stand the weight from a large stacker.



CURTIS steering system



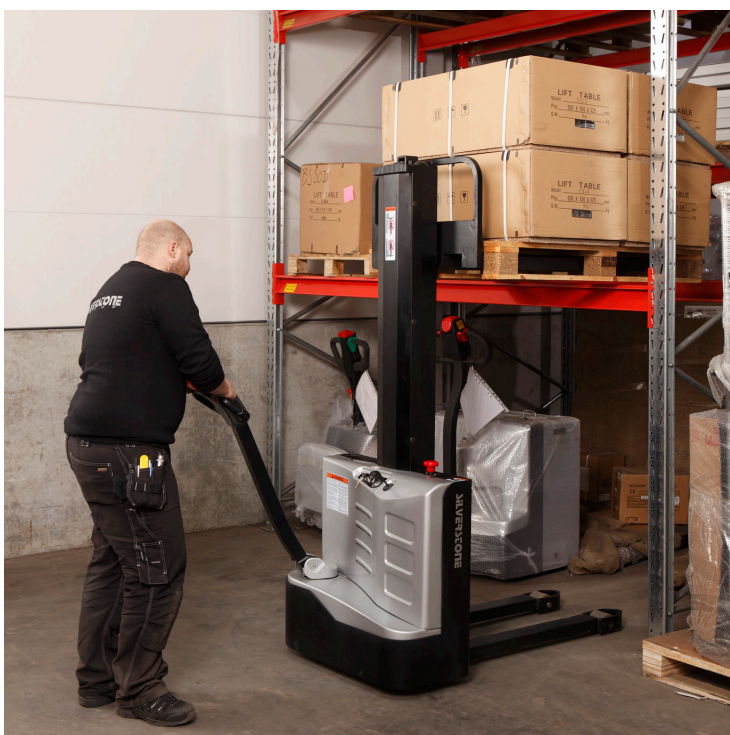
Built-in charger and maintenance free batteries

TECHNICAL INFORMATION				
Art.no	ES12-1600	ES12-2700	ES12-3300	ES12-3600
Type	Walkie	Walkie	Walkie	Walkie
Capacity (kg)	1200	1200	1200	1200
Weight incl. battery (kg)	462	529	551	573
Wheel type	PU/PU	PU/PU	PU/PU	PU/PU
Steering wheel	Ø210x70	Ø210x70	Ø210x70	Ø210x70
Wheels (x=driving wheel)	1x +2/4	1x +1/4	1x +1/4	1x +1/4
Free lift (mm)	1590	-	-	-
Lifting height (mm)	1600	2700	3300	3600
Lifting speed, load/no load (cm/sek)	12/22	12/22	12/22	12/22
Height, mast extended (mm)	1955	3180	3780	4087
Dimensions (LxWxH) (mm)	1615x800x1940	1700x800x1865	1740x800x2200	1740x800x2320
Fork dimensions (LxBxH) (mm)	1150x160x55	1150x160x55	1150x160x55	1150x160x55
Outer fork width (mm)	550	560	560	560
Aisle width with 800x1200 pallet (mm)	2062	2150	2150	2150
Turning radius (mm)	1295	1408	1408	1408
Travel speed, load/no load (km/ h)	4/4,7	4/4,7	4/4,7	4/4,7
Max gradeability load/no load (%)	3/10	3/10	3/10	3/10
Brakes	Electro-magnetic	Electro-magnetic	Electro-magnetic	Electro-magnetic
Battery (V/Ah)	2x12/80	2x12/105	2x12/105	2x12/105
Battery type	Maintenance free	Maintenance free	Maintenance free	Maintenance free
Steering system	CURTIS	CURTIS	CURTIS	CURTIS
Drive motor (kW)	DC 0,65	DC 0,65	DC 0,65	DC 0,65
Lift motor (kW)	2,2	2,2	2,2	2,2
Price				

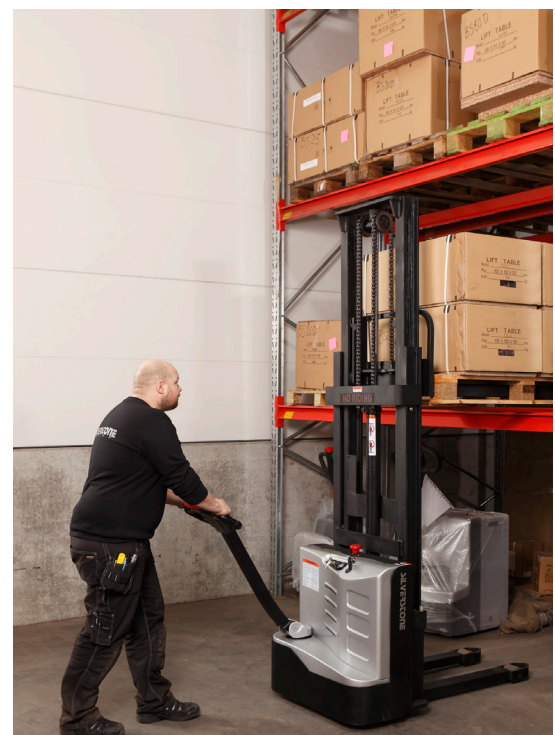
* Polyurethane wheel = PU

Four lifting heights

- 1600 mm
- 2700 mm
- 3300 mm
- 3600 mm



ES12-1600



ES12-3300

POWERED STACKERS

ES12-1650i | Initial lift, 1200 kg

Compact and manoeuvrable pedestrian stacker with initial lift for handling two pallets simultaneously or driving on uneven surfaces. Mono mast gives good visibility when driving. Excellent stacker for smaller warehouses or stores.

- INITIAL LIFT
- FREE LIFT 1480MM
- COMPACT DESIGN
- BUILT-IN CHARGER AND MAINTENANCE FREE BATTERIES



TECHNICAL INFORMATION		
Art. no		ES12-1650i
Type		Walkie
Total Capacity	(kg)	1200
Lifting height incl initial	(mm)	1650
Outer dimensions (LxWxH)	(mm)	1700x800x1940
Ground clearance	(mm)	26
Fork dimensions (LxWxH)	(mm)	1150x190x60
Outer fork width	(mm)	560
Weight	(kg)	520
Wheel type		PU/PU
Steering wheel	(mm)	Ø210x70
Fork wheel	(mm)	Ø80x60
Balance wheel	(mm)	Ø130x55
Wheels (x=driving wheel)		1x+1/4
Load center	(mm)	600
Free lift	(mm)	1480
Initial lift	(mm)	115
Height - mast extended	(mm)	2090
Aisle width with 800x1200 pallet	(mm)	2260
Turning radius	(mm)	1500
Travel speed, load/no load	(km/ h)	4,5 - 5,0
Lift speed, load/no load	(cm/s)	10 - 14
Lowering speed, load/no load	(cm/s)	10 - 7
Brakes		Electromagnetic
Battery	(V/Ah)	24/85
Battery type		Maintenance free
Steering system		CURTIS
Drive motor	(kW)	DC 0,65
Lift motor	(kW)	2,2
Price		

Capacity upper forks at maximum lift height:
800kg

Total capacity at maximum load on upper forks:
1200kg

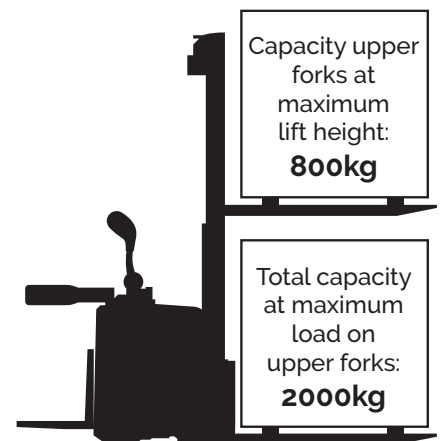
ES08-1600WAI | Initial lift, 2000kg

Compact walkie stacker, perfect for order picking, transportation and stacking up to 1600 mm height. The mono mast gives the worker a good sight over the load and forks. An ergonomic steering arm with easily accessible controls facilitates handling. The stacker is equipped with a rubber steering wheel which results in a good grip. The compact design makes the stacker optimal for trucks and in narrow warehouses.

- INITIAL LIFT
- FREE LIFT 1550MM
- COMPACT DESIGN
- BUILT-IN CHARGER AND MAINTENANCE FREE BATTERIES
- RUBBER STEERING WHEEL



TECHNICAL INFORMATION	
Art. no	ES08-1600WAI
Type	Walkie
Capacity	(kg) 2000
Capacity upper forks	(kg) 800
Lifting height	(mm) 1590
Outer dimensions (LxWxH)	(mm) 1775x738x1860
Ground clearance	(mm) 30
Fork dimensions (LxWxH)	(mm) 1150x190x60
Weight	(kg) 660
Wheel type	PU/Rubber
Steering wheel	(mm) Ø230x75
Fork wheel	(mm) Ø85x70
Balance wheel	(mm) Ø85x48
Wheels (x=driving wheel)	1x+2/4
Load center	(mm) 600
Free lift	(mm) 1550
Initial lift	(mm) 120
Height - mast extended	(mm) 2020
Aisle width with 800x1200 pallet	(mm) 2198
Turning radius	(mm) 1442
Travel speed, load/no load	(km/ h) 5.0 - 5.5
Lift speed, load/no load	(cm/s) 11 - 16
Lowering speed, load/no load	(cm/s) 20 - 13
Brakes	Electromagnetic
Battery	(V/Ah) 24/224
Battery type	Maintenance free
Steering system	ZAPI
Drive motor	(kW) AC 1,27
Lift motor	(kW) 2,2
Price	



POWERED STACKERS

EST101-3000 | 1000 kg

The Silverstone EST101-3000 pedestrian stacker is a cost-effective full electric stacker for everyday use. It is a compact, flexible and lightweight full electric go-stacker.

- FULL ELECTRIC GO-STACKER
- LIFTING HEIGHT 3000 MM
- COMPACT DESIGN
- CURTIS STEERING SYSTEM
- BUILT IN CHARGER AND MAINTENANCE FREE BATTERIES



TECHNICAL INFORMATION	
Art. no	EST101-3000
Type	Walkie
Total capacity (kg)	1000
Lifting height (mm)	3000
Outer dimensions (LxWxH) (mm)	1656x800x2050
Ground clearance (mm)	26
Fork dimensions (LxWxH) (mm)	1150x170x60
Outer fork width (mm)	570
Weight (kg)	520
Wheel type	PU/PU
Steering wheel (mm)	Ø210x70
Fork wheel (mm)	Ø74x72
Balance wheel (mm)	Ø80x61
Wheels (x=driving wheel)	1x+1/4
Load center (mm)	600
Height - mast extended (mm)	3515
Aisle width with 800x1200 pallet (mm)	2150
Turning radius (mm)	1342
Travel speed, load/no load (km/h)	4,0 - 4,5
Lift speed, load/no load (cm/s)	11 - 21
Lowering speed, load/no load (cm/s)	12 - 11
Battery (V/Ah)	2x12/85
Battery type / Central filling	Maintenance free
Brakes	Electromagnetic
Drive motor (kW)	DC 0,65
Lift motor (kW)	2,2
Steering system	CURTIS
Price	

ES141-3300 | 1400 kg

An economical and cost effective ride-on stacker with power steering as standard. Automatic parking brake and automatic braking when cornering for increased safety. Compact stacker suitable for easy material handling in several places such as shops, warehouses smaller industries and more. Ergonomic controls, maintenance-free batteries and built-in charger makes the operation and maintenance very easy.

- AUTOMATIC PARKING BRAKE
- POWER STEERING
- AUTOMATIC BRAKING WHEN CORNERING
- BUILT-IN CHARGER AND MAINTENANCE-FREE BATTERIES



TECHNICAL INFORMATION		
Art. no		ES141-3300
Type		Rider stand
Total capacity	(kg)	1400
Lifting height	(mm)	3300
Outer dimensions (LxWxH)	(mm)	1724x800x2110
Ground clearance	(mm)	25
Fork dimensions (LxWxH)	(mm)	1150x600x170
Outer fork width	(mm)	750
Weight	(kg)	770
Wheel type		PU/PU
Steering wheel	(mm)	Ø250x102
Fork wheel	(mm)	Ø85x95
Balance wheel	(mm)	Ø130x55
Wheels (x=driving wheel)		1x+1/2
Load center	(mm)	600
Free lift	(mm)	-
Height - mast extended	(mm)	3725
Aisle width with 800x1200 pallet	(mm)	2103
Turning radius	(mm)	1788
Travel speed, load/no load	(km/h)	5,0 - 5,5
Lift speed, load/no load	(cm/s)	10 - 18
Lowering speed, load/no load	(cm/s)	21 - 21
Battery	(V/Ah)	48/65
Battery type		Maintenance free
Brakes		Electromagnetic
Drive motor	(kW)	DC 0,9
Lift motor	(kW)	2,2
Steering system		CURTIS
Price		

POWERED STACKERS

ES16RS-4500/5000 | 1600 kg

Silverstone stacker with power steering and proportional valve as standard. The stacker is equipped with proven technology including lift motor from Bucher and Zapi steering system. The focus is on comfort and economy where PV valve allows precision when lowering the load and where the power steering ensures that you have energy throughout the day.

- EPS
- ZAPI STEERING SYSTEM
- PROPORTIONAL VALVE



ES16RS-4500

TECHNICAL INFORMATION		
Art.no	ES16RS-4500	ES16RS-5000
Type	Rider stand	Rider stand
Capacity (kg)	1600	1600
Lifting height (mm)	4500	5000
Outer dimensions (LxWxH) (mm)	2029/2551x850x2022	2029/2551x850x2187
Ground clearance (mm)	28	28
Fork dimensions (LxWxH) (mm)	1150x190x60	1150x190x60
Outer fork width (mm)	570	570
Weight (kg)	1420	1440
Wheel type	PU/PU	PU/PU
Steering wheel (mm)	Ø230x75	Ø230x75
Fork wheel (mm)	Ø85x70	Ø85x70
Balance wheel (mm)	Ø130x55	Ø130x55
Wheels (x=driving wheel)	1x+1/4	1x+1/4
Load center (mm)	600	600
Free lift (mm)	1590	1760
Height - mast extended (mm)	4960	5460
Aisle width with 800x1200 pallet (mm)	2557/2935	2557/2935
Turning radius (mm)	1730/2090	1730/2090
Travel speed, load/no load (km/h)	5,5 - 6,0	5,5 - 6,0
Lift speed, load/no load (cm/s)	13 - 16	13 - 16
Lowering speed, load/no load (cm/s)	25 - 28	25 - 28
Battery (V/Ah)	24/280	24/280
Battery type / Central filling	Industry battery / Yes	Industry battery / Yes
Brakes	Electromagnetic	Electromagnetic
Drive motor (kW)	AC 1,6	AC 1,6
Lift motor (kW)	3	3
Steering system	ZAPI	ZAPI
Price		

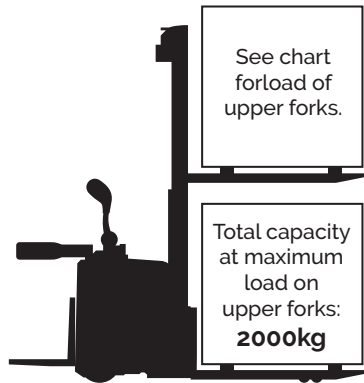


ES16RSI-5000 | 1600 kg

Silverstone stacker with power steering and proportional valve as standard. The stacker is equipped with proven technology including lift motor from Bucher and Zapi steering system. The focus is on comfort and economy where PV valve allows precision when lowering the load and where the power steering ensures that you have energy throughout the day.

- INITIAL LIFT
- EPS
- ZAPI STEERING SYSTEM
- PROPORTIONAL VALVE

LOAD OF UPPER FORKS			
2700 mm	1600 kg	3900 mm	1000 kg
3000 mm	1500 kg	4200 mm	800 kg
3300 mm	1300 kg	4500 mm	700 kg
3600 mm	1200 kg	5000 mm	600 kg



TECHNICAL INFORMATION		
Art.no		ES16RSI-5000
Type		Rider stand
Total capacity	(kg)	1600
Lifting height	(mm)	5000
Outer dimensions (LxWxH)	(mm)	2099/2551x850x2187
Ground clearance	(mm)	28
Fork dimensions (LxWxH)	(mm)	1150x190x60
Outer fork width	(mm)	570
Weight	(kg)	1440
Wheel type		PU/PU
Steering wheel	(mm)	Ø230x75
Fork wheel	(mm)	Ø85x70
Balance wheel	(mm)	Ø130x55
Wheels (x=driving wheel)		1x+1/4
Load center	(mm)	600
Free lift	(mm)	1760
Height - mast extended	(mm)	5580
Aisle width with 800x1200 pallet	(mm)	2597/3024
Turning radius	(mm)	1730/2090
Travel speed, load/no load	(km/h)	5,5 - 6,0
Lift speed, load/no load	(cm/s)	13 - 16
Lowering speed, load/no load	(cm/s)	25 - 28
Battery	(V/Ah)	24/280
Battery type / Central filling		Industry battery / Yes
Brakes		Electromagnetic
Drive motor	(kW)	AC 1,6
Lift motor	(kW)	3
Steering system		ZAPI
Price		



ES16RSLI-5000 | 1600 kg

Silverstone stacker with power steering and proportional valve as standard. The stacker is equipped with proven technology including lift motor from Bucher and Zapi steering system. The focus is on comfort and economy where PV valve allows precision when lowering the load and where the power steering ensures that you have energy throughout the day.

- EPS
- ZAPI STEERING SYSTEM
- PROPORTIONAL VALVE



TECHNICAL INFORMATION	
Art. no	ES16RSLI-5000
Type	Rider stand
Total capacity (kg)	1600
Lifting height (mm)	5000
Outer dimensions (LxWxH) (mm)	2495x850x2020
Ground clearance (mm)	28
Fork dimensions (LxWxH) (mm)	1150x190x60
Outer fork width (mm)	600
Weight (kg)	1280
Wheel type	PU/PU
Steering wheel (mm)	Ø230x75
Fork wheel (mm)	Ø85x70
Balance wheel (mm)	Ø130x55
Wheels (x=driving wheel)	1x1/4
Load center (mm)	600
Free lift (mm)	100
Height - mast extended (mm)	5460
Aisle width with 800x1200 pallet (mm)	2557/2935
Turning radius (mm)	1730/2090
Travel speed, load/no load (km/h)	8,0 - 9,0
Lift speed, load/no load (cm/s)	11 - 17
Lowering speed, load/no load (cm/s)	25 - 30
Battery (V/Ah)	24/210
Batteritype	Lithium Maintenance free
Brakes	Electromagnetic
Drive motor (kW)	AC 2,5
Lift motor (kW)	3,0
Steering system	ZAPI
Price	

LHON
LITHIUM TECHNOLOGY



JXo

With a working height of up to 5 m, the JXo is an alternative to ladders that are used today in stores, maintenance work or when picking. Only 750mm wide, the JXo is suitable for driving in narrow spaces and corridors. The load surface can be raised and lowered (electrically), which gives a good visibility while driving as well as an ergonomic working position.

- **COMPACT DESIGN**
- **WORKING HEIGHT UP TO 5 METERS**
- **LOADING AREA WITH ELECTRIC LIFTING AND LOWERING**
- **BUILD IN CHARGER (230V)**
- **BLUESPOT FOR EXTRA SECURITY**



PERFECT FOR

- **STORES**
- **WAREHOUSE**

TECHNICAL INFORMATION		
Art.no		JXO - 3060
Type		Rider stand
Capacity	(kg)	350
Maximal height working platform	(mm)	3000
Outer dimensions (LxWxH)	(mm)	1440x750x1370
Ground clearance	(mm)	35
Weight	(kg)	800
Wheel type		PU/Rubber
Area front load tray	(mm)	540x740
Maximal working height	(mm)	ca 5000
Wheel base	(mm)	1095
Turning radius	(mm)	1260
Travel speed, load/no load	(km/h)	6/6,5 km/h
Lowering speed, load/no load	(cm/s)	30 - 29
Battery	(V/Ah)	24/120
Battery type		Maintenance free
Brakes		Electromagnetic
Drive motor	(kW)	DC 0,65
Lift motor	(kW)	2,2
Steering system		ZAPI
Price		



ORDER PICKER



Front load tray



- WORKING HEIGHT UP TO 6 M
- COMPACT AND EASY TO NAVIGATE
- 1358 MM TURNING RADIUS
- AC DRIVE CONTROL
- MAINTENANCE FREE BATTERY

CK-05 | 500 kg

ORDER PICKING AT HIGH HEIGHTS

Silverstone CK-05 solves many of the high altitude problems and tasks that you may face when working in industry, warehouse and retail shops. Order picking up to 6 m is no problem.

CK-05 is simple and easy to maneuver thanks to the electric steering and well-designed controls. CK-05 only needs 1,8 meter wide aisle to make a U-turn.

Maintenance work on high levels often means bulky and wobbly ladders in action and yet stability and space is limited. With Silverstone CK-05 you drive around smoothly and easily with space for both materials and tools on board. Do you need to move around the properties while towing one or many carts? No problem, CK-05 solves this task with elegance and safety. CK-05 is equipped with non-marking polyurethane wheels.

PERFECT FOR

- WORKSHOPS
- STORES
- WAREHOUSES

TECHNICAL INFORMATION		CK-05-4200
Art.no		CK-05-4200
Type		Rider stand
Capacity	(kg)	500
Maximal height working platform	(mm)	4100
Outer dimensions (LxWxH)	(mm)	1500x800x2100
Ground clearance	(mm)	50
Weight	(kg)	1340
Wheel type		PU/PU
Area front load tray	(mm)	520x800
Height working platform, rear	(mm)	346x660
Operators max. standing height	(mm)	4550
Maximal working height	(mm)	ca 6000
Operators compartment size	(mm)	545x800
Wheel base	(mm)	1140
Turning radius	(mm)	1358
Travel speed	(km/h)	5,5
Lift speed, load/no load	(cm/s)	17 - 21
Lowering speed, load/no load	(cm/s)	35 - 26
Battery	(V/Ah)	24/225
Battery type		Electromagnetic
Brakes		Maintenance free
Drive motor	(kW)	AC 1,5
Lift motor	(kW)	2,2
Steering system		ZAPI
Price		

TECHNICAL INFORMATION		CK22-2620
Art.no		CK22-2620
Type		Order picker with forks
Capacity	(kg)	800
Maximal height working platform	(mm)	2620
Outer dimensions (LxWxH)	(mm)	2750x800x2340
Ground clearance	(mm)	50
Weight	(kg)	1620
Wheel type		PU/Rubber
Fork dimensions (LxWxH)	(mm)	1070x100x35
Outer fork width	(mm)	560
Fork height - min/max	(mm)	50/800
Maximal working height	(mm)	ca 4500
Height - mast extended	(mm)	4555
Area for driver	(mm)	550x690
Load center	(mm)	600
Aisle width with 800x1200 pallet	(mm)	3160
Wheel base	(mm)	1330
Turning radius	(mm)	1515
Travel speed	(km/h)	8
Lift speed	(cm/s)	15
Lowering speed	(cm/s)	17
Battery	(V/Ah)	24/360
Battery type		Industrial battery with central filling
Brakes		Electromagnetic
Drive motor	(kW)	AC 2,5
Lift motor	(kW)	3
Steering system		ZAPI
Pris		

CK22-2620 | 800 kg

Silverstone CK-22 solves many of the upcoming problems and tasks during material handling at high heights. Max. lifting height of the platform is 3000 mm which makes an effective working height of up to 4800 mm possible (depending on height of the operator). In order to ensure optimal working height, maximal fork height can be up to 800 mm. CK-22 is smooth and easy to navigate thanks to electronic power steering and well designed controls. The operator is well protected to enable safe ride.

PERFECT FOR

- WORKSHOPS
- STORES
- WAREHOUSES



- WORKING HEIGHT UP TO 4500 mm
- COMPACT AND EASY TO NAVIGATE
- AC DRIVE CONTROL
- 360AH INDUSTRY BATTERY

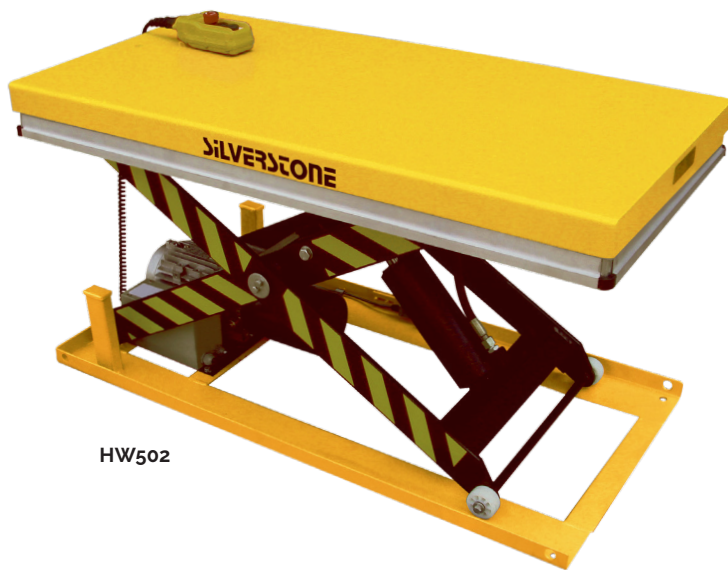
LIFT TABLE

LIFT TABLE | 500-3000 kg

Maintenance free pivot bushings. Large safety clearance between the scissors to avoid injuries. Lift cylinder with internal drainage. Safety valve to ensure safety in case of a hose burst. Low-noise power pack with built-in overload valve. Cable for 3-phase 380V/16Ah*. Approves to EN1570-1.



HW1001-Z
* Table area 916x610mm



HW502

OPTION



Foot control with emergency stop HWF-100

- Fits to all electronic tables
- Wire length 5 m

TECHNICAL INFORMATION						
Art.no		HW502-Y	HW1001-Z	HW1012-Y	HW2011-Y	HW3000-Y
Type		Single scissor	Single scissor	Single scissor	Single scissor	Single scissor
Capacity	(kg)	500	1000	1000	2000	3000
Table area (LxW)	(mm)	1200x800	916x610	1200x800	1300x800	1300x800
Base frame size (LxW)	(mm)	1180x680	896x858	1180x680	1255x735	1255x735
Weight	(kg)	122	115	146	204	320
Lifting height, min-max	(mm)	190-900	180-770	190-900	190-1010	220-1010
Lifting time to max height	(s)	15-20	15-20	15-20	15-20	15-20
Lifting motor		380V/50HZ 1,1kW	380V/50HZ 1,1kW	380V/50HZ 1,1kW	380V/50HZ 1,5kW	380V/50HZ 2,2kW
Price						

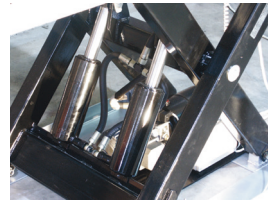
*Option: 3 phase 230V/50HZ

LIFT TABLE | 500-4000 kg

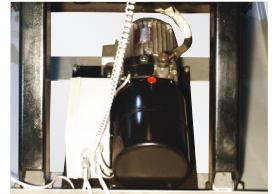
Maintenance free pivot bushings. Large safety clearance between the scissors to avoid injuries. Lift cylinder with internal drainage. Safety valve to ensure safety in case of a hose burst. Moveable limit switch for adjusting full raised stop. 4 end-stops, incl. 4 loops which can be used e.g. when lifting total lift table into a pit. Low-noise power pack with built-in overload valve. Cable for 3-phase 380V/16Ah*. Approves to EN1570-1.



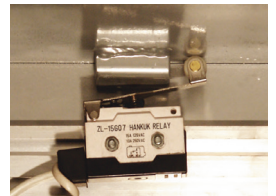
HW1001



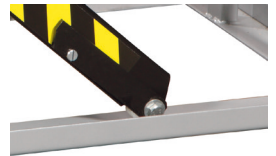
1 or 2 cylinders = 1000 or 2000/4000 kg.



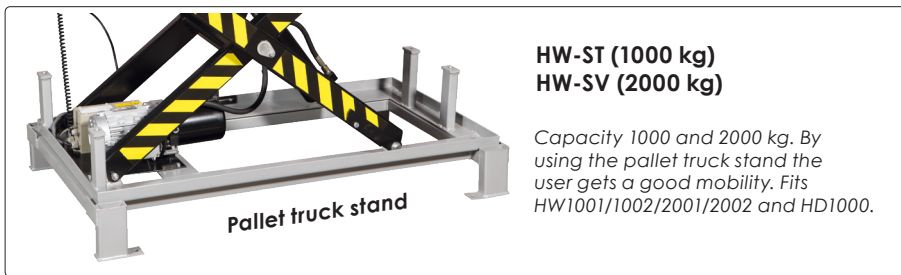
Low-noise power pack equip-ped with built-in overload valve and flow compensated valve for controlled lowering speed.



The upper platform has a safety frame that covers all four sides. There are double switches for lowering safety of the platform.



Mechanic stop enables safe maintenance.



HW-ST (1000 kg)
HW-SV (2000 kg)

Capacity 1000 and 2000 kg. By using the pallet truck stand the user gets a good mobility. Fits HW1001/1002/2001/2002 and HD1000.

TECHNICAL INFORMATION

Art.no	HW500L	HW1001	HW1001-220	HW1002	HW1004	HW1005	HW1006	HW2001	HW2002	HW2005	HW4002	HW4006
Type	Single scissor	Single scissor	Single scissor	Single scissor	Single scissor	Single scissor	Single scissor	Single scissor	Single scissor	Single scissor	Single scissor	Single scissor
Capacity (kg)	500	1000	1000	1000	1000	1000	1000	2000	2000	2000	4000	4000
Table area (LxW) (mm)	2000x800	1300x820	1300x820	1600x1000	1700x1000	2000x850	2000x1000	1300x850	1600x1000	2000x850	2000x1200	2200x1200
Base frame size (mm)	1650x660	1255x680	1255x680	1266x680	1600x680	1600x680	1600x680	1255x785	1255x785	1630x785	1600x930	1980x930
Stroke length (mm)	800	785	785	785	1060	1060	1060	770	770	1050	810	1100
Weight (kg)	193	160	160	186	186	212	223	235	268	300	405	505
Lifting height, min-max (mm)	200-1000	205-990	205-990	205-990	240-1300	240-1300	240-1300	230-1000	230-1000	250-1300	240-1050	300-1400
Lifting time to max height (s)	15-20	10-15	10-15	15-20	20-25	30-35	30-35	20-25	20-25	20-25	25-30	25-30
Lifting motor	380V/50HZ 1,1kW	380V/50HZ 1,1kW	220V/50HZ 1,1kW	380V/50HZ 1,1kW	380V/50HZ 1,1kW	380V/50HZ 1,1kW	380V/50HZ 1,1kW	380V/50HZ 1,5 kW	380V/50HZ 1,5 kW	380V/50HZ 1,5 kW	380V/50HZ 2,2 kW	380V/50HZ 2,2 kW
Price												

*Option: 3 phase 230V/50HZ

VERTICAL & HORIZONTAL SCISSOR LIFTS | 800-4000 KG

Tables for high lifts and long goods. Table should be fixed into floor with bolted joints. Lifting height up to 4210 mm. Maintenance free pivot bushings. Large safety clearance between the scissors to avoid injuries. Lift cylinder with internal drainage. Safety valve to ensure safety in case of a hose burst. Low-noise power pack with built-in overload valve. Safety switch in top position. Moveable limit switch for adjusting full raised stop. 4 end-stops, incl. 4 loops which can be used e.g. when lifting total lift table into a pit. Low-noise power pack with built in overload valve. Cable for 3-phase connection 380V/16 Ah. Approves to EN1570-1.



MJ-Q801



HD1000



LV4000

TECHNICAL INFORMATION

Art.no	HD1000	HD2000	HD4000	HT1000	MJ-Q801	LV2000	LV4000
Type	Double scissor	Double scissor	Double scissor	Triple scissor	Four scissor	Horizontal double scissor	Horizontal double scissor
Capacity (kg)	1000	2000	4000	1000	800	2000	4000
Table area (LxW) (mm)	1300x820	1300x850	1700x1200	1700x1000	1700x1000	2500x820	2500x850
Base frame size (LxW) (mm)	1250x680	1255x785	1600x930	1660x1000	1606x1010	2470x680	2470x785
Stroke Length (mm)	1475	1420	1650	2530	3504	795	770
Weight (kg)	210	295	520	450	858	265	360
Lifting height, min-max (mm)	305-1780	360-1780	400-2050	470-3000	706-4210	205-1000	230-1000
Lifting time to max height (s)	20-25	25-30	30-35	45-50	60-65	15-20	25-30
Lifting motor	380V/50HZ 1,5 kW	380V/50HZ 2,2 kW	380V/50HZ 2,2 kW	380V/50HZ 2,2 kW	380V/50HZ 2,2 kW	380V/50HZ 2,2 kW	380V/50HZ 2,2 kW
Price							

LOW PROFILE LIFT TABLE | With ramp

Static electro-hydraulic lift tables are specially made for installation without a pit. Lowered height is only 85 mm. Built with solid steel plates for highest strength and reliability. Separate hydraulic power pack (IP54) which is positioned next to the lift table. The moveable ramp is included. Cable for 3-phase connection 380V/16 Ah. Confirms to EN1570-1 and ANSI/ASME-norms.



SL1001

LOW PROFILE LIFT TABLE | U-shaped

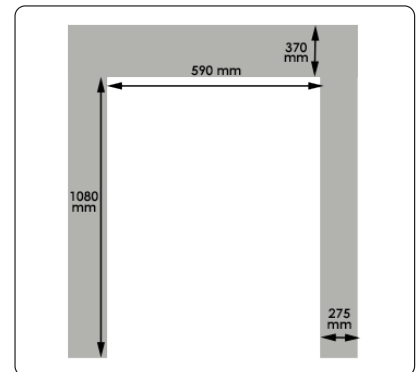
Static electro-hydraulic U-shaped lift table are specially made for pallet handling together with normal hand pallet truck. Installation do not need ramp or pit. Lowered height is only 85 mm. Built with solid steel plates for highest strength and reliability. Separate hydraulic power pack (IP54) which is positioned next to the lift table. Cable for 3-phase connection 380V/16 Ah. Confirms to EN1570-1 and ANSI/ASME-norms. Inner length of fork 1080 mm.



SU1001



SU1001



Measure sketch SU1001.

TECHNICAL INFORMATION

Art.no	SL1001	SL1003	SL1502	SU1001	SU1500
Type	Low profile	Low profile	Low profile	U-shaped	U-shaped
Capacity (kg)	1000	1000	1500	1000	1500
Table area (LxW) (mm)	1450x1140	1450x800	1600x1000	1450x1140	1600x1200
Base frame size (LxW) (mm)	1076x1330	1736x1330	1430x936	1076x1330	1430x1136
Stroke Length (mm)	775	775	775	775	755
Weight (kg)	357	357	401	280	380
Lifting height, min-max (mm)	85-860	85-860	105-870	85-860	105-860
Lifting time to max height (s)	18	15	20	15	20
Lifting motor	380V/50HZ 1,1 kW	380V/50HZ 1,1 kW	380V/50HZ 1,5 kW	380V/50HZ 1,1 kW	380V/50HZ 1,5 kW
Width between forks/forks (mm)	-	-	-	590/275	590/305
Price					

MOBILE LIFT TABLES

MANUAL LIFT TABLES | BS

Lifting with a foot pump and lowering with a handle. Medium duty design, smooth and easy to operate. Known for their unbeatable mechanical strength and reliability. Available in single or double scissors.



BS15 has a foldable handle, height 295 mm.



All tables have polyurethane wheels with roller bearing and castor. Rear wheels are equipped with brakes and wheel guards.



BS15



BS25



BS50/BS75



BS100



BS30D/BS80D



ES30D/ES80D

ELECTRIC LIFT TABLES | ES

Lifting and lowering by a push-button controller, connected to a European power pack (DC/700W). Maintenance free battery which gives many working hours per charging and a long life. Known for their unbeatable mechanical strength and reliability. These tables are used for many types of work. Available in single or double scissors.

TECHNICAL INFORMATION

Art.no	BS15	BS25	BS50	BS75	BS100	BS30D	BS80D	ES30D	ES80D
Type	Manual	Manual	Manual	Manual	Manual	Manual	Manual	Electric	Electric
Capacity (kg)	150	250	500	750	1000	300	800	300	800
Table area (LxW) (mm)	700x450	830x500	1010x520	1010x520	1010x520	1010x520	1010x520	1010x520	1010x520
Table height, min-max (mm)	255-760	330-910	430-1000	435-1000	445-950	435-1585	470-1410	495-1600	510-1460
Stroke Length (mm)	505	580	570	565	505	1150	940	1105	15
Weight (kg)	41	78	118	120	137	150	165	183	-
Handle height (mm)	1000	1100	1130	1130	1130	1130	1185	1185	1010x520
Wheel diameter (mm)	Ø100	Ø125	Ø150	Ø150	Ø150	Ø150	Ø150	Ø150	Ø150
Pump strokes to max height	16	25	44	55	68	53	95	-	-
Lifting time to max height (s)	-	-	-	-	-	-	-	15	15
Outer dimensions (LxWxH) (mm)	950x450x255-760	1010x500x330-910	1185x520x430-1000	1260x520x435-1000	1260x520x445-950	1260x520x435-1585	1260x520x470-1410	1260x520x495-1600	1260x520x510-1460
Price									

ES100L | EUR pallet



ES100L

The table platform has EUR-pallet dimensions. The table construction is very robust, but is still very easy to maneuver due to low net weight. This table is famous for its mechanical strength and operation reliability. Lifting and lowering by a push-button controller, connected to a European power pack (DC/1,2 kW). Maintenance free battery which gives many working hours per charging and a long lifetime.

- **MOBILE, ELECTRIC LIFT TABLE - SINGLE SCISSORS**
- **CAPACITY: 1000 kg**
- **MAX. HEIGHT: 1220 mm**
- **TABLE AREA: 1200 X 800 mm**

Bs50LB | EUR pallet



Bs50LB

The table platform has EUR-pallet dimensions. The table construction is very robust, but is still very easy to maneuver due to low net weight. This table is famous for its mechanical strength and operation reliability. Manual lifting by foot pump and lowering by handle. Simple and reliable design ensures long lifetime.

- **MOBILT, MANUAL LIFT TABLE - SINGLE SCISSORS**
- **CAPACITY: 500 KG**
- **MAX HEIGHT: 1190 MM**
- **TABLE AREA: 1200X800 MM**

SX-175 | Stainless

This stainless steel mobile screw lift table is very easy to operate and move. The single scissor is operated manually by a handle, can be used on both sides. Non-marking castor wheels with dual foot brakes. Table platform moves 10 mm up/down at each 360 degrees rotation of the crank handle.



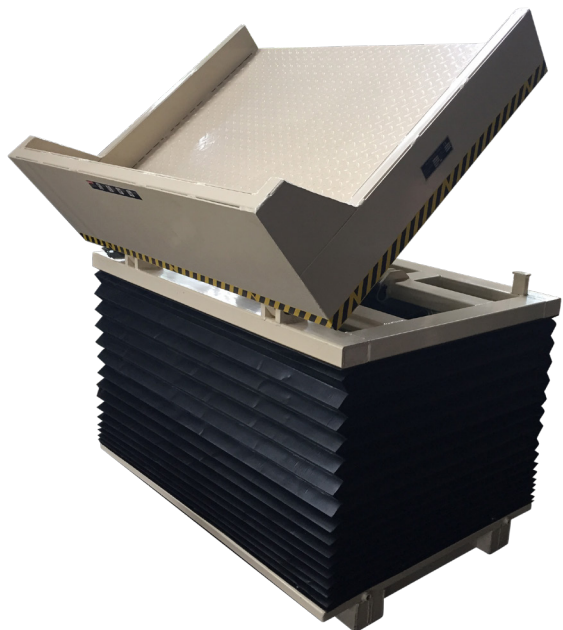
TECHNICAL INFORMATION				
Art.no		ES100L	Bs50LB	SX-175
Type		Electric lift table	Manual lift table	Manual lift table
Capacity	(kg)	1000	500	175
Table height, min-max	(mm)	430-1220	370-1150	400-900
Lifting time to max height	(s)	20-25	-	-
Pump strokes to max height		-	75	-
Table area (LxW)	(mm)	1200x800	1200x800	1000x800
Dimensions	(mm)	1390x800	1390x800	1000x800
Handle height	(mm)	1185	1030	-
Wheel diameter	(mm)	Ø200	Ø150	Ø100
Lifting motor	(kW)	1,2	-	-
Weight	(kg)	225	160	41
Price				

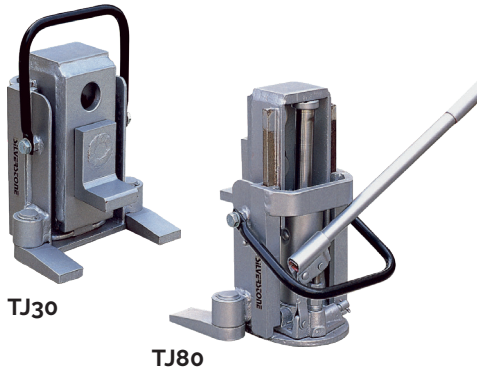
CUSTOMIZED LIFT TABLES

Customized lift tables

Silverstone markets and stores almost 40 different Lift Tables. Occasionally there is a need for a unique and adapted Lift Table. You may need to lift extra high, extra large Table area or you may need to use it outdoors. Regardless your different needs, we can supply your Lift Table.

The Lift Table will be special manufactured according to your requirements and we will be able to deliver in about 3 months. Please have a look at the pictures on different examples of Lift Tables we have delivered.





TJ series | Hydraulic jack toe, 3-8 ton

Compact and strong toe jack has three (3) toe heights and is very versatile designed. The hydraulic pump is protected by the lift housing. Manual pump lever. It lifts both on the toe and on the top housing. Lift handle and adjustable support legs are included.



HM series | Hydraulic allround jack, 5-25 ton

This ultra-low-profile with compact and reliable basic design can be used in all positions, horizontal and vertical. It lifts both on the foot and on the top housing. The housing of the jack can rotate 360 degrees which makes it unique. Suitable for all types of repairs, maintenance and installation works. The very low foot height measures only 25, 30 or 58 mm. Removable pump lever. Accurate lowering speed.

HVS series | Steel jack, 3-10 ton

This series is developed in accordance with the latest safety regulations. Milled rack, geared wheels and tempered parts of driving gear. Lift from toe or the clawed head. Safety crank with folding handle.



HFJ series | Hydraulic forklift jack, 4-7 ton

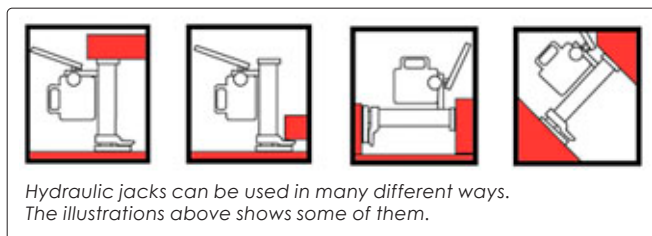
Specially designed for forklift trucks, high capacity and a robust construction. Extra low pick-up position with double 2-position lift pad levels for hard-to reach places under low profile forklift trucks. Unique design of the hydraulic pump incl. high-quality seal kits and built-in overload protection valve. Removable handle and compact size. Confirms EC- and ANSI-standards. Support stands are included.



SUPPORT STANDS

Stands supports for Forklift truck and other heavy machines. Heavy duty design with a wide foot base. Adjustable height: 240-410mm.

2 stands always comes with the HFJ400A/700A.



Hydraulic jacks can be used in many different ways. The illustrations above shows some of them.

TECHNICAL INFORMATION											
Art.no	TJ30	TJ80	HFJ400A	HFJ700A	HM50	HM100	HM250	HVS3A	HVS5A	HVS10A	HT-7
Capacity (ton)	3	8	4	7	5	10	25	3	5	10	18/pair
Stroke length (mm)	130	140	341	355	205	230	215	350	300	300	-
Lift range (mm)	15-240	25-295	57-406	65-420	25-573	30-650	58-720	75-1075	70-1025	90-1100	240-410
Weight (kg)	22	28	35+12	53+12	25	35	102	20	24	42	6,7
Price											

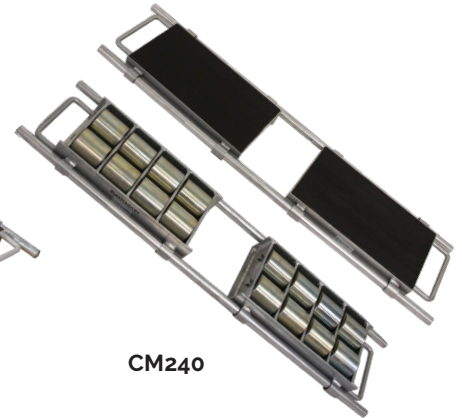
MACHINE SKATES



CM60



CM120



CM240

CM series | Skates, adjustable, 6-24 ton

The adjustable skates are two skate units which are connected by two steel rods, making the width of the skates adjustable. The skates can also be used as separate individuals.



RC15

RC15 | Roller crowbar, 1,5 ton

Long and steady manual roller lifter that lifts up the first millimetres above floor level to make it possible to then use a hydraulic lift jack. When the load is lifted up the skates can be positioned below.



ST30

ST60

ST120

ST series | Skates, steerable, 3-12 ton

The steerable skates include a 1 meter long drawbar and a skate platform that swivels on a thrust bearing, allowing easy movement around corners. On the ST60 and ST120 there is a towing hook-on bracket to be used by a forklift truck.

TECHNICAL INFORMATION

Art.no	CM60	CM120	CM240	ST30	ST60	ST120	RC15
Capacity (ton)	6	12	24	3	6	12	1,5
Wheel type	Nylon	Nylon	Steel	Nylon	Nylon	Steel	Steel
No of wheels	8	12	16	4	8	12	-
Wheel size (ØxW) (mm)	85x90	85x90	83x85	85x90	85x90	83x85	-
Dimensions (LxWxH) (mm)	320x270x110	420x270x110	495x290x110	300x200x105	640x540x115	640x570x115	-
Length (mm)	-	-	-	-	-	-	2000
Height, max (mm)	-	-	-	-	-	-	200
Wheel diameter (mm)	-	-	-	-	-	-	100
Wheel width (mm)	-	-	-	-	-	-	55
Weight (kg)	30	38	65	15	50	66	13
Price							

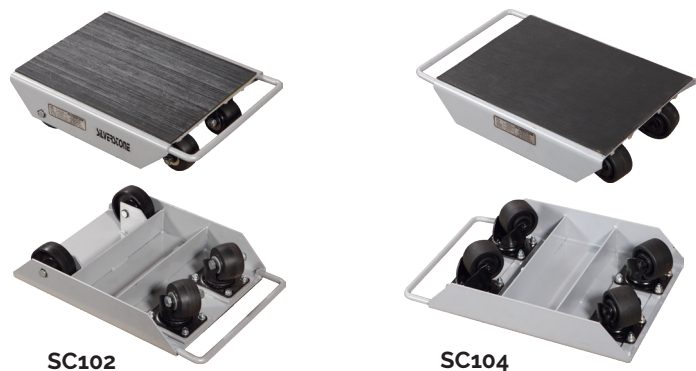
SF series | Skates, fixed, 1-6 ton

Skates can be used wherever heavy objects have to be moved. The large diameter nylon rollers ensure easy movement and spread the load evenly, protecting the floor or ground from damages caused by high point loads. A practical steel handle is welded onto the skate for easy and safe handling and positioning of the skates. The platforms of the skates are fitted with a rubber surface which helps grip and protect the object being moved. Powerful wheel pins. The wheels are mounted in rubber-sealed roller bearings (RS). In SF10 and SF20 there are no bearings mounted due small nylon wheels.



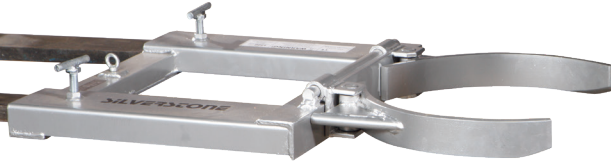
SC series | Skates, with castor, 1 ton

The castor skates are available in two models. SC 102 with 2 castor wheels and 2 fixed wheels for versatile turning of goods. SC 104 with 4 castor wheels for totally free turning of goods.



TECHNICAL INFORMATION							
Art.no	SF10	SF20	SF25	SF30	SF60	SC102	SC104
Capacity (ton)	1	2	2,5	3	6	1	1
Wheel type	Nylon	Nylon	Nylon	Nylon	Nylon	Nylon	Nylon
No of wheels - shaft	4 - 2	8 - 2	2 - 2	4 - 2	6 - 3	-	-
No of caster wheels	-	-	-	-	-	2	4
No of fixed wheels	-	-	-	-	-	2	0
Diameter, castor wheel (mm)	-	-	-	-	-	75x46	75x46
Diameter, fixed wheel (mm)	-	-	-	-	-	100x35	-
Wheel size (ØxW) (mm)	100x35	100x35	85x90	85x85	85x85	-	-
Dimensions (LxWxH) (mm)	400x230x115	400x230x115	275x120x100	400x230x100	415x210x100	430x340x120	430x340x120
Weight (kg)	7	8	4	9,5	12	13	14
Price							

DRUM HANDLING



DG10



DL350 | Drum lifter, 350 kg

For lifting 210 litres steel drum. Easy moves and handles open or closed head, loaded steel drums. Allows quick, gentle loading into over packs and keeps drums upright during lift, minimise spills and injuries. Works easily with overhead hoist or hook from forklift. Weighs 9,5 kg. Capacity 350 kg.



DL350

DG10 | Mechanical drum grab, 470 kg

The drum grab is made for forklift trucks. It lifts 210 litre steel drums easily and quickly, without any hydraulic or electrical connections. The drum grab slips onto forks and is locked with screws. You lift, transport and deposit drums without leaving the driver position. Capacity for DG10 is 470 kg. Weighs 55 kg.

WA30A | Hydraulic drum truck, 300 kg

Ergonomic lifts, transports, and places poly/steel/fibre drums on/off pallets. A spring-loaded clamp securely holds any rimmed drum. Suitable lifting height for ledge and car. Compact design and very easy to handle.

TECHNICAL INFORMATION		WA30A
Art.no		WA30A
Capacity	(kg)	300
Drum size		5572 mm (Ø22,5"), 210 Liters
Front wheel	(mm)	Ø125x32
Rear castor	(mm)	Ø125x32
Lifting height, min-max	(mm)	870-1675
Dimensions (LxWxH)	(mm)	952x956x1560
Weight	(kg)	72
Price		



WA30A

TECHNICAL INFORMATION	
Art.no	EC1000
Capacity (kg)	1000
Weight (kg)	98
Total width (mm)	1000
Dimensions (LxWxH) (mm)	1360x1000x1595
Price	

EC series | Crane for EUR pallet

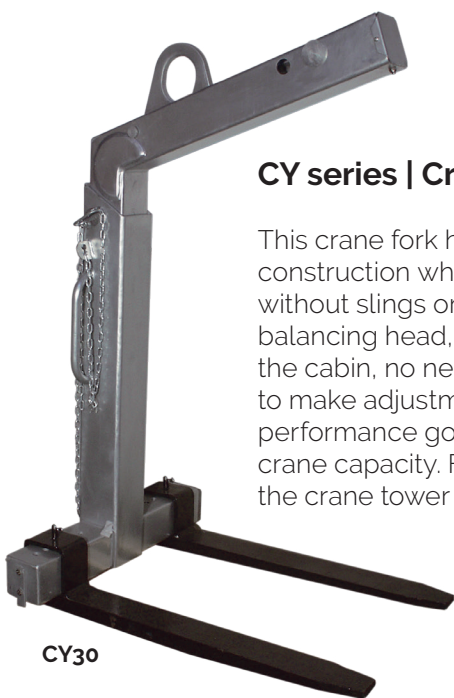
Heavy-duty designed work shop crane. Made with Euro pallet dimensions, 840 mm between support legs. U-shaped support legs. There are 4 reach-out positions and lifting capacities. Turnable hook. Built-in overload protection valve. Overload testing before delivery. Distance between floor and lowest part of support leg, 60 mm.



EC1000

CY series | Crane fork, 1500-3000 kg

This crane fork has a very handy and robust construction which can be operated easily without slings or chains. CY-series, with its self-balancing head, let the crane operator stay in the cabin, no need to step out from lorry/crane to make adjustments. To achieve best balance performance goods should weigh 20% of total crane capacity. Fork width is adjustable and so is the crane tower in height.



CY30



EX series | Fork extensions

The simple but effective way of lengthening your forks to be able to handle longer loads safely. Heavy duty steel construction, fits on forks which are up to 50 mm in thickness.

TECHNICAL INFORMATION		CY15	CY30	EX1800/100	EX1800/125	EX2200/100	EX2200/125	EX2400/125	EX2400/150
Work load limit (kg)		1500	3000	1000	2500	1000	2500	2500	5000
Adjustable fork width (mm)		350-900	450-900	-	-	-	-	-	-
Hook height (mm)		1655-2355	1720-2420	-	-	-	-	-	-
Effective height (mm)		1300-2000	1300-2000	-	-	-	-	-	-
Fork length (mm)		1000	1000	1800	1800	2200	2200	2400	2400
Fork cross (WxH) (mm)		100x40	120x50	-	-	-	-	-	-
Fits to fork width (mm)		-	-	100 x 45	125 x 45	100 x 45	125 x 45	125 x 45	150 x 50
Dimensions (LxWxH) (mm)		1127x932x1650-2350	1140x920x1720-2420	-	-	-	-	-	-
Weight (kg)		165	280	71	71	87	87	94	94
Price									

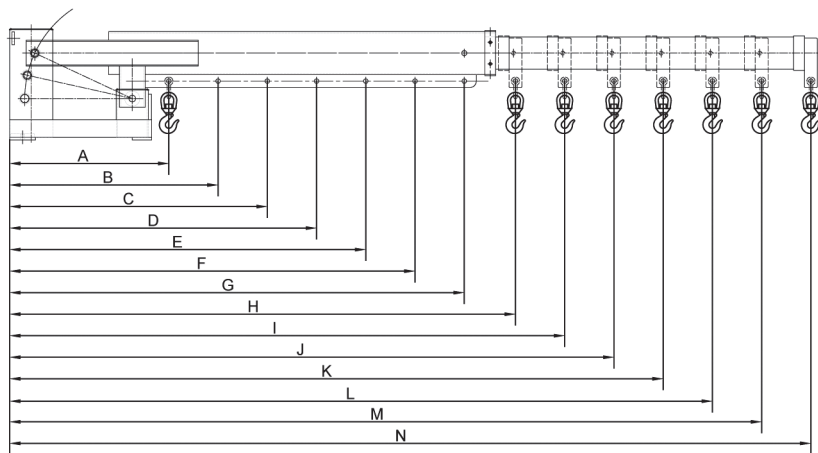
MK25 | Fork hook, 2500 kg

Converts a forklift into a mobile crane in seconds. This fork hook is adjustable along the length of the forks and secures the forks with thumb screws. Swivel hook includes a safety hatch. Weight is 25 kg and suits max. fork dimension 160x60 mm.



CW30 | Crane scale, 20-3000 kg

A compact measuring device for weighing loads during lifting. Tara functions to show either gross or net loads. Remote maneuvered. Suits very well with our fork hook, MK25. Measuring range is 20-3000 kg and indexing accuracy is 1 kg. Net weight is 15 kg.



AR-E30 | Telescopic fork, 596-3000 kg

Useful fork truck crane for heavy loads where it normally is hard to access/reach. The crane is adjustable in height up to 40 degrees and reaches 3726 mm at most.

TECHNICAL INFORMATION														
Art.no	AR-E30													
Positions	A	B	C	D	E	F	G	H	I	J	K	L	M	N
Length (mm)	740	969	1198	1427	1656	1885	2114	2352	2581	2810	3039	3268	3497	3726
Capacity (kg)	3000	2291	1853	1556	1341	1178	1050	944	860	790	730	679	635	596
Price														

FM60 | Manual movers, 600 kg

For moving bulky and heavy items. Ideal for delivery and installation works. Manual movers made of steel profiles, lift winch, crank handle, lift plates are covered with rubber pad, dual support rails, two PU castor wheels with bearings and 5 m fixing straps. Comes in pairs.



FM180B

FM180A/B | Hydraulic transporter, 100-250 mm lifting height

For professional transport of heavy machines and furniture. Ideal for delivery, maintenance and installation works. Hydraulic transporters made of tubular profiles. Lift cylinders with pump handle. Lift plates have rubber pads, double supported frame, two steerable PU castor wheels with bearings and 5 m fixing straps. Comes in pairs.

AR150 | Transport corners 600 kg

For light-weight moving of rectangular goods on even grounds. Suitable for delivery and removal of furniture. Manual corners made of steel plates, with rubber pads and 3 castor wheels with bearings. 4 units per set.



AR150

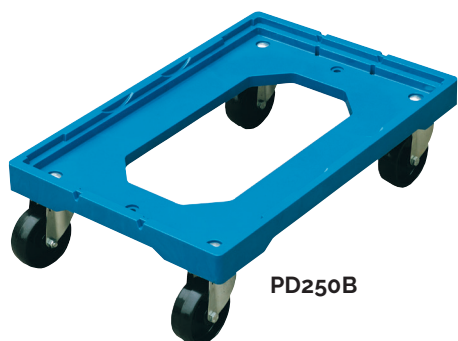
TECHNICAL INFORMATION					
Art.no		AR150	FM60	FM180A	FM180B
Capacity	(kg)	600	600	1800	1800
Lifting height	(mm)	-	300	100	250
Lifting plate	(mm)	-	225x120	600x60	600x60
Weight	(kg)	8	25	80	80
Price					

XT8022 | STRAPPING MACHINE

Semiautomatic strapping machine straps small and medium big packages easy and fast without need for adjustments. Tighten, weld and cut PP strap automatically. It has a stainless steel table platform and is equipped with swivel wheels to enable easy movement. Dimensions (mm): 565x895x720-870. 220V 50Hz connection. PP tape width 6-15 mm. PP tape paper core Ø200mm/Ø230mm/Ø280mm. Max tightening force 60 kg. Weight 85 kg.

Accessories:

PP-band, Art. no. PPR12.
Width 12 mm, inner roll diameter 200 mm,
Length 1000 m.



PD250B

PD250B | Dollies, plastic

Light-weight design in ABC-plastic, Nylon castor wheels. Available in different versions and capacities.



PP2-200

PP1-200

PP series | Platform trolleys, 200 kg

Platform trolleys made of bolted steel tubes and profiles with one or two plastic platforms.



High quality non-marking wheels

TECHNICAL INFORMATION									
Art.no	Type of trolley	Capacity (kg)	Dimensions HxWxL (mm)	Wheel diameter (mm/type)	Wheels, castor-fixed	Container, min	Container, max	Weight (kg)	Price
PD250B	Dollie, plastic	250	604x402x162	-	4-0	300x300	600x400	3,8	
PP1-200	Platform trolley, foldable handle, plastic shelf, steel frame	200	860x500x800	100 / solid / PU	-	-	-	13	
PP2-200	Platform trolley, 2 plastic shelves, 1 handle, steel frame	200	920x500x800	100 / solid / PU	-	-	-	18,5	

TR-100 | Alu truck, 100 kg

This range of warehouse and sack trucks are made of bolted, riveted or welded aluminium profiles with single or double knife/foot plate, which can be fixed or folded. Solid tyres, strong rims, maintenance free rubber-sealed bearing and safety handles are standard on most trucks.



TR-100



HT-1312

HT series | Steel trucks, 100-250 kg

This range of warehouse and sack trucks are made of welded steel tubes with single or double knife / foot plate, that can be fixed or folded. Solid tyres, strong steel rims, maintenance free rubber-sealed bearings.



HT-1824



HT-1823A



HT-1827

TECHNICAL INFORMATION

Art.no	Type of truck	Platform & knife	Capacity (kg)	Dimensions HxWxL (mm)	Wheel diameter (mm/type)	Weight (kg)	Price
TR-100	Folded compact hand truck, aluminium	FP	100	1080x500x235	175 / solid	4,5	
HT1312	Stair climbing sack truck, general purpose	FP + SK	150	1155x400x755	160 / solid	19	
HT-1823A	Sack truck, general purpose	FP+SK	250	1140x400x300	250 / pneu.	13	
HT-1824	Sack truck and trolley, triple function	FP+SK	250	1310x600x400	250 / pneu.	20	
HT-1827	Sack truck, general purpose	FP + SK	200	1310x600x400	250 / pneu.	15	

* Standard Platform = SP, Foldable Platform = FP, Standard Knife = SK and Foldable Knife = FK

GSH1809045

Flexible and very affordable shelf in powder coated steel and shelves made of MDF wood. Suitable for garage, workshop and warehouse. The shelves are adjustable in height with 40 mm intervals. Easy to install - no screws!

PERFECT FOR

- GARAGES
- WAREHOUSES
- WORKSHOPS
- INDUSTRIES

TECHNICAL INFORMATION		
Art. no		GSH1809045
Dimensions (HxLxW)	(mm)	1800x900x45
Weight	(kg)	24
Colour:		Grey
Price		



UNIVERSAL SHELVING | 2 versions

A system which can be combined in many variations. Each section is a complete unit. The assembly of the system is very simple and safe. The unique design allows access from all four sides. The bottom of the upright beams has a protective plastic foot, to avoid damage to the floor. Without the chipboards it can be used as tyre shelving. Each shelf can carry 400 kg.



TECHNICAL INFORMATION

Type	Dimensions (WxDxH) mm	Art. No	Colour	Price
Package A: 2 shelves*	1830x455x910	455 910	-	
Package A: 2 shelves*	1830x610x910	610 910	-	
Package A: 2 shelves*	1830x915x910	916 910	-	
Package B: 3 shelves*	1830x455x2130	455 2130	-	
Package B: 3 shelves*	1830x610x2130	610 2130	-	
Package B: 3 shelves*	1830x915x2130	916 2130	-	
Package C: 4 shelves*	1830x455x2440	455 2440	-	
Package C: 4 shelves*	1830x610x2440	610 2440	-	
Package C: 4 shelves*	1830x915x2440	916 2440	-	
Tyre shelving (no chipboard) 3 shelves	1830x455x2130	D2130	-	
Tyre shelving (no chipboard) 4 shelves	1830x455x2440	D2440	-	
Post	H=910 mm	AP3-910	Blue	
Post	H=2130 mm	AP7-2130	Blue	
Post	H=2440 mm	AP8-2440	Blue	
Connection plate for posts		T.T	-	
Double rivet beam	L=455 mm	DRB18-455	Light grey	
Double rivet beam	L=610 mm	DRB24-610	Light grey	
Double rivet beam	L=915 mm	DRB36-915	Light grey	
Double rivet beam	L=1830 mm	DRB72-1830	Light grey	
Shelf support, 1 pc / level	L=455 mm	SDS18-455	Light grey	
Shelf support, 1 pc / level	L=610 mm	SDS24-610	Light grey	
Shelf support, 1 pc / level	L=915 mm	SDS36-915	Light grey	
Chipboard 19 mm	1830x455mm	S-455	-	
Chipboard 19 mm	1830x610mm	S-610	-	
Chipboard 19 mm	1830x915mm	S-915	-	

*Posts, beams, shelf supports and chipboards are included in the packages.

KNOCK-DOWN CABINETS

The knock-down cabinet is a boltless self-assembly model delivered as a flat pack. This makes it to a low cost alternative to the ready welded cabinet versions both as product and as for transportation. Two sizes are available in colour blue or grey. Four adjustable shelves are included. Additional shelves also available.

- Additional shelves also available.



PSKB1000



PSKG900

TECHNICAL INFORMATION

Art.no	Version	Type	Dimensions HxWxL (mm)	Colour	Weight (kg)	Price
PSKG 900	Knock-down	Single	1850x900x400	Grey / RAL 7035	46	
PSKB 900	Knock-down	Single	1850x900x400	Blue / RAL 5010	46	
PSKG 1000	Knock-down	Single	2000x1000x500	Grey / RAL 7035	68	
PSKB 1000	Knock-down	Single	2000x1000x500	Blue / RAL 5010	68	

STEEL CABINETS | 80/90/100 cm

Durable welded metal cabinet with reinforced doors and concealed espanjolett locker. Four adjustable shelves incl. in each cabinet. Additional shelves also available. 0,7 mm steel thickness. Each shelf can carry 60 kg.

- Additional shelves also available.



PSB80



PSS80

STEEL CABINET | Environmental

Durable welded metal cabinet with reinforced doors and concealed espanjolett locker and four adjustable liquid-leak-free shelves. It has all security functions except fire protection. Lockable doors with perforated squares for air circulation. Filter plates are optional which fits the liquid collecting shelf pan. 0,7 mm steel thickness. Each shelf can carry 60 kg.



PSKG92

TECHNICAL INFORMATION

Art.no	Version	Type	Dimensions HxWxL (mm)	Colour	Weight (kg)	Price
PSB80	Welded steel cabinet	Single	1800x800x380	Blue / RAL 5010	41	
PSG80	Welded steel cabinet	Single	1800x800x380	Grey / RAL 7035	41	
PSS80	Welded steel cabinet	Single	1800x800x380	Black / RAL 9005	41	
PSB92	Welded steel cabinet	Single	1950x920x420	Blue / RAL 5010	54	
PSG92	Welded steel cabinet	Single	1950x920x420	Grey / RAL 7035	54	
PSS92	Welded steel cabinet	Single	1950x920x420	Black / RAL 9005	54	
PSB100	Welded steel cabinet	Single	2000x1000x500	Blue / RAL 5010	69	
PSG100	Welded steel cabinet	Single	2000x1000x500	Grey / RAL 7035	69	
PSS100	Welded steel cabinet	Single	2000x1000x500	Black / RAL 9005	69	
PSKG92	Welded environmental cabinet	Single	1950x920x420	Grey / RAL 7035	58	
PSKG92FHP	Filter plate					

WE TURN THE TRUCK MARKET UPSIDE DOWN



SilverstoneMaterialhantering



SilverstoneMaterialhantering

Silverstone AB | Gjuterigatan 10, 341 31 Ljungby | Tel. 0372-694 30 | info@silverstone.se | www.silverstone.se

We reserve us against printing, text or picture errors, as well as the right to changes without prior notice.